


ILS or LOC/DME RWY 1

LOC I-RFB 110.1	APCH CRS 007°	Rwy Idg 9000 THRE 579 Arpt Elev 580	AL-276 [USAF]	SELFIDGE ANGB (KMTG)
<p>▼ * When ALS inop, increase RVR to 50, vis to 1 mile. ** When ALS inop, increase CAT AB RVR to 55 and vis to 1 mile CAT CDE vis to 1 3/8 miles.</p>			<p>SALS </p>	<p>MISSED APPROACH: Climb to 4000 on MTC R-007 to CASKO and hold, continue climb-in-hold to 4000.</p>

ATIS 125.325 270.1	SELFRIDGE APP CON 119.6 318.2	SELFRIDGE TOWER ★ 120.15 (CTAF) 0 225.4	GND CON 128.3 275.8	CLNC DEL 128.3 275.8
-----------------------	----------------------------------	--------------------------------------------	------------------------	-------------------------

*** Circling not authorized W of Rwy 1-19.

A1018

CAUTION: 5 NM Intermediate Segment Length. Recommend Early Configuration.

SELFRIDGE
Chan 64 MTC 

LOCALIZER 110.1
LBER ..

ASAKE
MTC

Max holding
alt 6000
Min holding
alt 4000

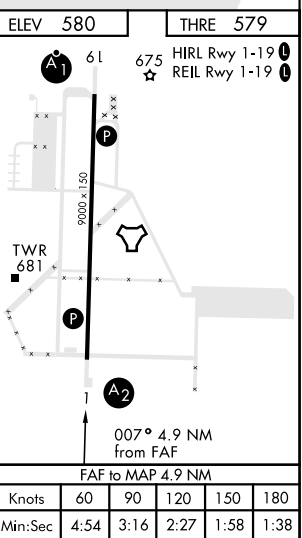
PONTIAC
111.0 PSI

LAJOY
MTC 56

EMERG SAFE ALT 100 NM 3100

[illegible]

4000 MTC R-007	CASKO
----------------------	-------



CATEGORY	A	B	C	D	E
S-ILS 01*	907/40		328	(400-¾)	
S-LOC 01**	1060/40	481 (500-¾)	1060/60	481 (500-1½)	
CIRCLING ***	1120-1	541 (600-1)	1120-1½ 541 (600-1½)	1140-2	561 (600-2)

MT. CLEMENS, MICHIGAN

42°36'N-82°50'W

SELFRIDGE ANGB (KMTC)

Amdt 3 23AUG12

ILS or LOC/DME RWY 1

DEC-1, 31 DEC 2020 to 28 JAN 2021

EC-1, 31 DEC 2020 to 28 JAN 2021