

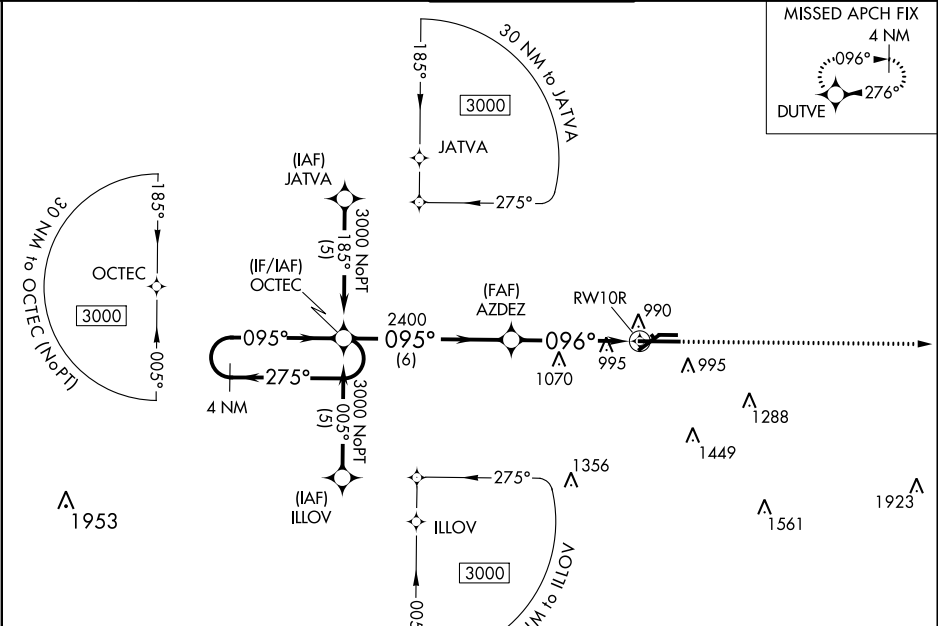


WAAS CH <b>61314</b> <b>W10A</b>	APP CRS <b>096°</b>	Rwy Idg TDZE <b>861</b> Apt Elev <b>861</b>
--	------------------------	---

RNAV (GPS) RWY 10R  
CAPITAL REGION INTL (L.A.N)

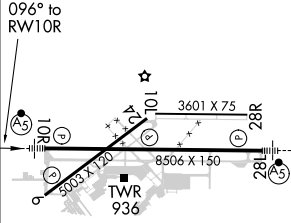
 For uncompensated Baro-VNAV systems, LNAV/VNAV NA below -16°C (4°F) or above 47°C (116°F). DME/DME RNP-0.3 NA. ** RVR 1800 authorized with use of FD or AP or HUD to DA.	MALSR 	MISSED APPROACH: Climb to 3000 direct DUTVE and hold.
---	---	---

ATIS <b>119.75</b>	GREAT LAKES APP CON ★ <b>118.65 226.4</b>	LANSING TOWER <b>119.9 240.9</b>	GND CON <b>121.9</b>	CLNC DEL <b>123.675</b>
-----------------------	--	-------------------------------------	-------------------------	----------------------------



4 NM Holding Pattern				
VGSI and RNAV glidepath not coincident (VGSI Angle 3.00/TCH 73).				
GP 3.00° TCH 56				
6 NM 3.3 NM 1.3 NM				
CATEGORY	A	B	C	D
LPV DA**	1061/24 200 (200-½)			
LNAV/VNAV DA	1290/50 429 (500-1)			
LNAV MDA	1320/24	459 (500-½)	1320/40 459 (500-¾)	1320/50 459 (500-1)
CIRCLING	1380-1	519 (600-1)	1380-1½ 519 (600-1½)	1440-2 579 (600-2)

ELEV 861 D TDZE 861



REIL Rwy 6 and 24  
HIRL Rwy 10R-28L  
MIRL Rwy 6-24 and 10L-28R

EC-1, 31 DEC 2020 to 28 JAN 2021

EC-1, 31 DEC 2020 to 28 JAN 2021