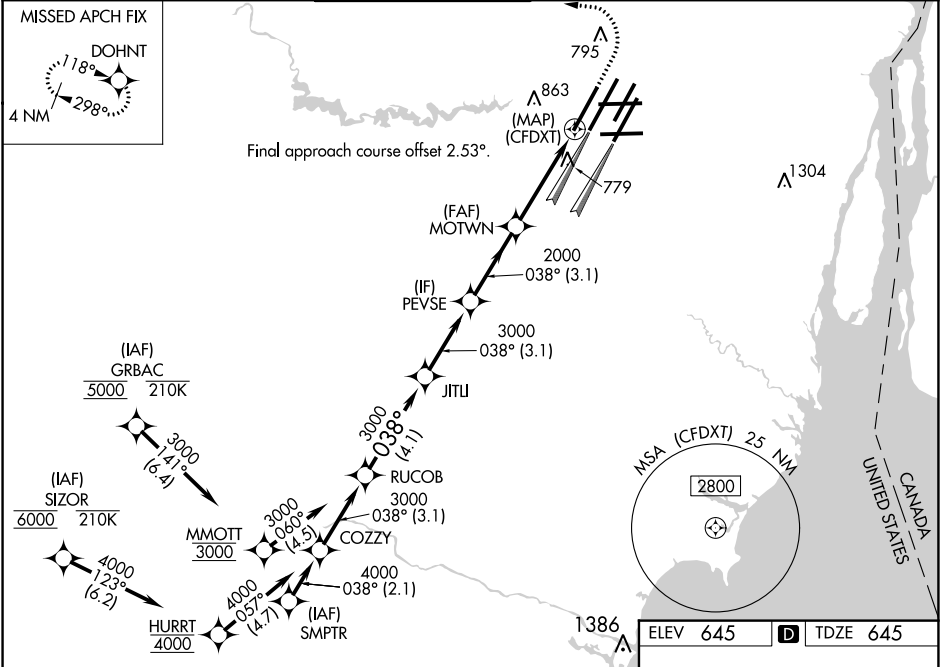


WAAS CH <b>82439</b> <b>W04A</b>	APP CRS <b>038°</b>	Rwy Idg <b>10000</b> TDZE <b>645</b> Apt Elev <b>645</b>
--	------------------------	--

RNAV (GPS) Y RWY 4L

DETROIT METROPOLITAN WAYNE COUNTY (DTW)

RNP APCH.		ALSIF-2		MISSED APPROACH: Climb to 1100 then climbing left turn to 4000 direct DOHNT and hold.	
Simultaneous approach authorized. LNAV procedure NA during simultaneous operations. Use of FD or AP required during simultaneous operations. For uncompensated Baro-VNAV systems, LNAV/VNAV NA below -19°C or above 54°C.					
D-ATIS <b>133.675</b>	DETROIT APP CON <b>124.05 284.0</b>	METRO TOWER <b>135.0 317.725</b>	GND CON <b>121.8 (NW) 119.45 (NE)</b> <b>132.725 (SW) 119.25 (SE)</b>	CLNC DEL <b>120.65</b>	CPDLC



VGSI and RNAV glidepath not coincident (VGSI Angle 3.00/TCH 71).				
1100 4000 DOHNT				
* LNAV only.				
RUCOB JITU PEVSE MOTWN				
3000 038° 3000 3000 2000				
GP 3.00° TCH 55				
4.1 NM 3.1 NM 3.1 NM 3.1 NM 1 NM				
CATEGORY	A	B	C	D
LPV DA	895/24		250 (300-½)	
LNAV/VNAV DA	1068/45		423 (500-¾)	
LNAV MDA	1040/24		1040/35	395 (400-¾)
CIRCLING	1180-1 535 (600-1)		1180-1½ 535 (600-1½)	1240-2 595 (600-2)

038° to (CFDXT)

TDZ/CL Rwys 3R, 4L, 4R and 22R

REIL Rwys 3L, 9L, 9R and 21R

HIRL all runways

EC-1, 31 DEC 2020 to 28 JAN 2021

EC-1, 31 DEC 2020 to 28 JAN 2021