

APP CRS	Rwy Idg	12003
216°	TDZE	637
	Apt Elev	645

RNAV (RNP) X RWY 22L

DETROIT METROPOLITAN WAYNE COUNTY (DTW)

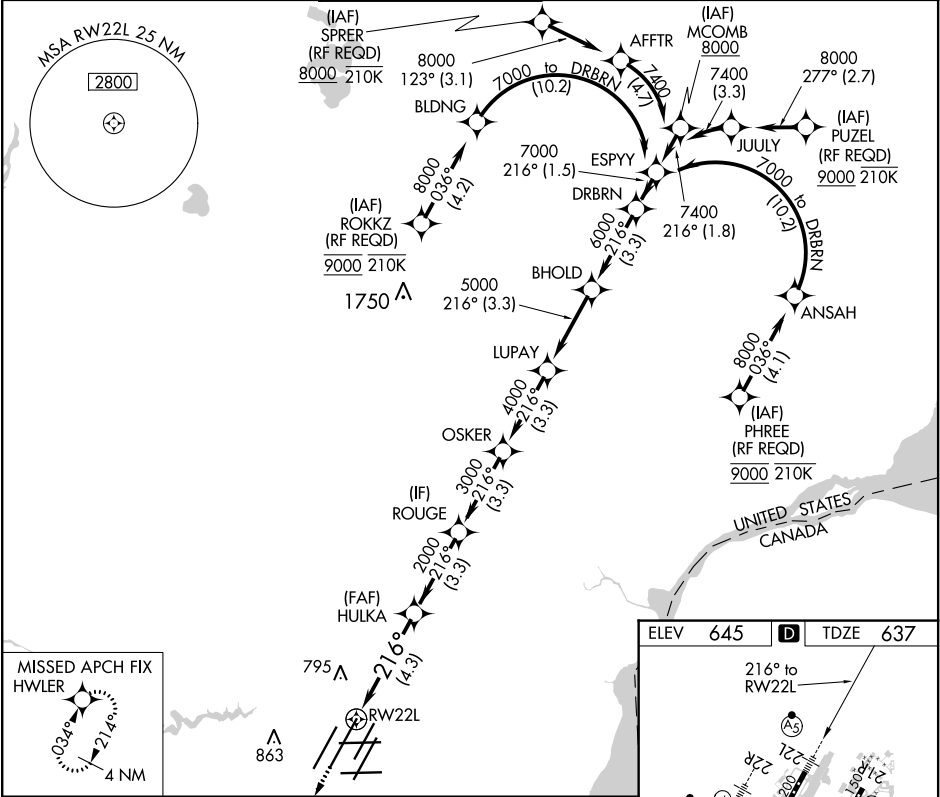
RNP AR APCH.

▼ For uncompensated Baro-VNAV systems, procedure NA below -10°C (14°F) or above 54°C (130°F). Simultaneous approach authorized. For inop ALS, increase RNP 0.15 all Cats visibility to RVR 4500 and RNP 0.30 all Cats visibility to RVR 6000.

MALSR

MISSED APPROACH:  
Climb to 4000 direct  
HWLER and hold.

D-ATIS	DETROIT APP CON	METRO TOWER	GND CON	CLNC DEL	CPDLC
133.675	124.05 284.0	128.125 317.725	121.8 (NW) 119.45 (NE) 132.725 (SW) 119.25 (SE)	120.65	



4000	HWLER	DRBRN
		7000
	HULKA	OSKER
	2000	4000
	ROUGE	5000
	3000	6000
	2000	
	4.3 NM	3.3 NM
		3.3 NM
		3.3 NM
		3.3 NM
		3.3 NM
		3.3 NM
CATEGORY	A	B
RNP 0.15 DA	941/24	304 (300-1/2)
RNP 0.30 DA	1040/40	403 (400-3/4)
AUTHORIZATION REQUIRED		

