

WAAS CH 42939 W22B	APP CRS 213°	Rwy Idg 10000 TDZE 642 Apt Elev 645
--	------------------------	--

RNAV (GPS) PRM Y RWY 22R (CLOSE PARALLEL)

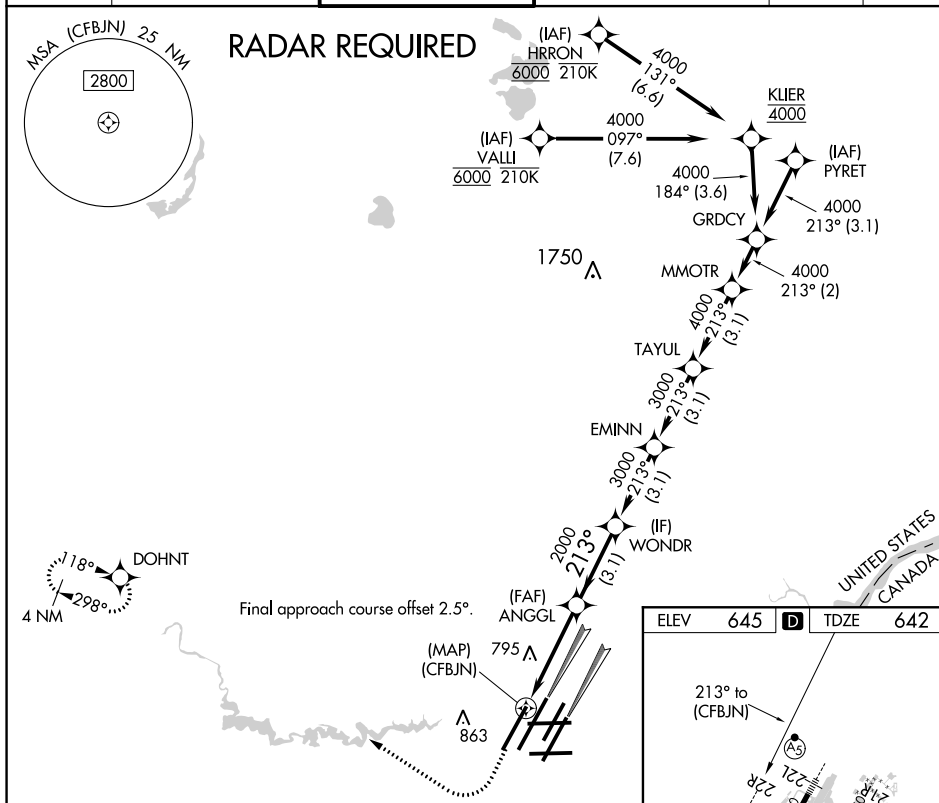
DETROIT METROPOLITAN WAYNE COUNTY (DTW)




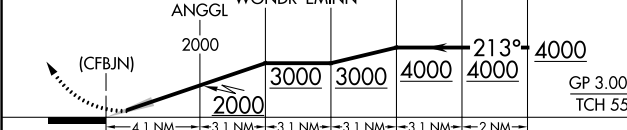
For uncompensated Baro-VNAV systems, LNAV/VNAV NA below -19°C (-2°F) or above 54°C (130°F). DME/DME RNP-0.3 NA. Use of FD or AP providing RNAV track guidance required during simultaneous operations. Simultaneous approach authorized. Dual VHF comm required. See additional requirements on AAUP.



MISSED APPROACH: Climb to 1100 then climbing right turn to 4000 direct DOHNT and hold.

D-ATIS 133.675	DETROIT APP CON 124.05 284.0	METRO TOWER 135.0 317.725 PRM 127.05	GND CON 121.8 (NW) 119.45 (NE) 132.725 (SW) 119.25 (SE)	CLNC DEL 120.65	CPDLC
--------------------------	--	--	---	---------------------------	-------



1100	4000	DOHNT	VGSI and RNAV glidepath not coincident (VGSI Angle 3.00/TCH 71).					
								
			ANGGL	WONDR	EMINN	TAYUL	MMOTR	GRDCY
			GP 3.00° TCH 55					
			4.1 NM	3.1 NM	3.1 NM	3.1 NM	2 NM	
CATEGORY	A		B		C		D	
LPV DA			892/24		250 (300-½)			
LNAV/ VNAV DA			1050/45		408 (500-⅞)			

