

WAAS CH 53300 W27B	APP CRS 276°	Rwy Idg 8500 TDZE 630 Apt Elev 645
--	------------------------	---

RNAV (GPS) RWY 27L

DETROIT METROPOLITAN WAYNE COUNTY (DTW)

RNP APCH.

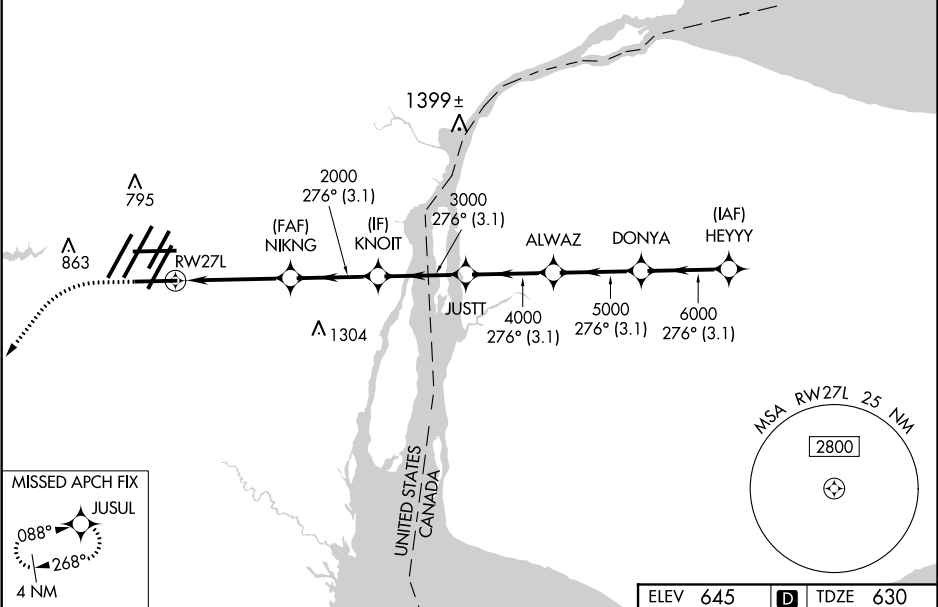
▼ For uncompensated Baro-VNAV systems, LNAV/VNAV NA below -19°C (-2°F) or above 54°C (130°F). Simultaneous approach authorized. LNAV procedure NA during simultaneous operations. Use of FD or AP required during simultaneous operations. For inop ALS, increase LNAV/VNAV all Cats visibility to RVR 5000. ** RVR 1800 authorized with use of FD or AP or HUD to DA.

MALS R

MISSED APPROACH:

Climb to 1100 then climbing left turn to 4000 direct JUSUL and hold.

D-ATIS 133.675	DETROIT APP CON 124.05 284.0	METRO TOWER 128.75 317.725	GND CON 121.8 (NW) 119.45 (NE) 132.725 (SW) 119.25 (SE)	CLNC DEL 120.65	CPDLC
--------------------------	--	--------------------------------------	---	---------------------------	-------



1100 ↑	4000 ↷	JUSUL ✦	VGSI and RNAV glidepath not coincident (VGSI Angle 3.00/TCH 71).			
*LNAV only.						
<p>The diagram illustrates an RNAV approach path. It begins with a dashed line from the left, curving right to a solid line segment. A dotted arc indicates a 1.2 NM distance to the RW27L runway. The path then continues as a solid line segment to the right, ending at a 276° heading. Key waypoints and altitudes are marked: NIKNG (2000), KNOIT (3000), JUSTT (4000), ALWAZ (5000), DONYA (6000), and HEYYY (7000). Distances between waypoints are: 1.2 NM (to RW27L), 2.9 NM (to NIKNG), 3.1 NM (to KNOIT), 3.1 NM (to JUSTT), 3.1 NM (to ALWAZ), 3.1 NM (to DONYA), and 3.1 NM (to HEYYY). The final segment to HEYYY is at a 276° heading. The diagram also shows a GP 3.00° TCH 56.</p>						
CATEGORY	A		B		C	D
LPV DA**	830/24		200 (200-½)			
LNAV/ VNAV DA	958/30		328 (400-⅝)			
LNAV MDA	1080/24 450 (500-½)		1080/45		450 (500-⅞)	
CIRCLING	1180-1 535 (600-1)		1180-1½ 535 (600-1½)		1240-2 595 (600-2)	

