

LOC/DME I-HJT 111.95 Chan 56(Y)	APP CRS 036°	Rwy Idg TDZE Apt Elev 10000 645 645
---	------------------------	---

ILS Z RWY 4L (CAT II & III)
DETROIT METROPOLITAN WAYNE COUNTY (DTW)

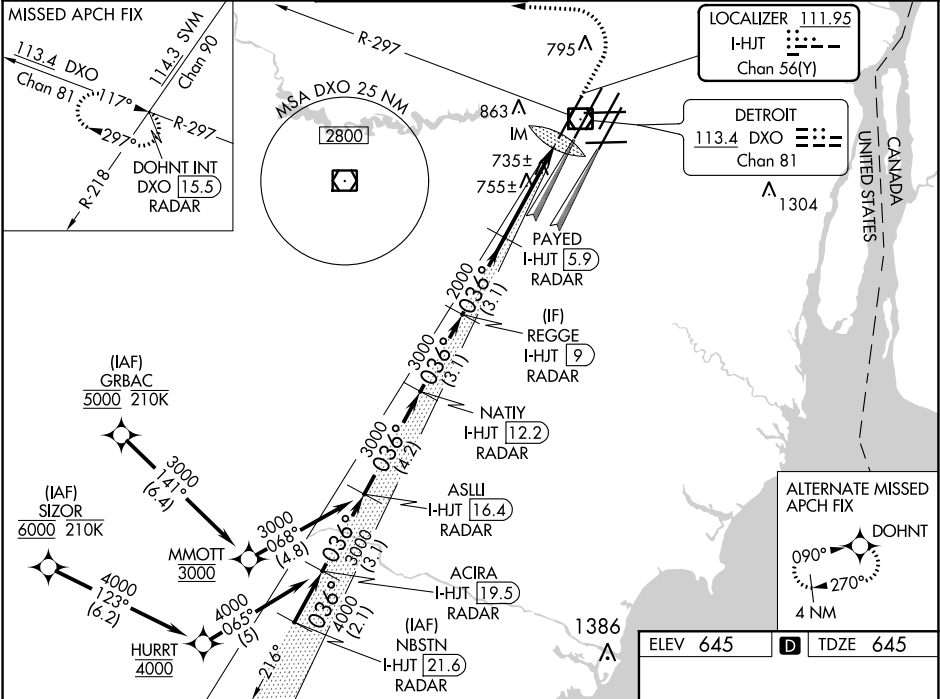
From GRBAC, SIZOR: RNAV 1-DME/DME/IRU or GPS required. Aircraft not DME/DME/IRU or GPS equipped - RADAR required for procedure entry. DME or RADAR required.

Simultaneous approach authorized. CAT II: RVR 1000 authorized with specific OPSPEC, MSPEC, or LOA approval and use of autoland or HUD to touchdown.

ALSF-2

MISSED APPROACH: Climb to 1100 then climbing left turn to 4000 on DXO VOR/DME R-297 to DOHNT INT/DXO 15.5 DME/RADAR and hold.

D-ATIS 133.675	DETROIT APP CON 124.05 284.0	METRO TOWER 135.0 317.725	GND CON 121.8 (NW) 132.725 (SW)	CON 119.45 (NE) 119.25 (SE)	CLNC DEL 120.65	CPDLC
--------------------------	--	-------------------------------------	---	---	---------------------------	-------



VGS1 and ILS glidepath not coincident (VGS1 Angle 3.00/TCH 71).			
ASLLI I-HJT 16.4 RADAR	NATIY I-HJT 12.2 RADAR	REGGE I-HJT 9 RADAR	PAYED I-HJT 5.9 RADAR
3000	3000	3000	2000
GS 3.00° TCH 55	4.2 NM	3.1 NM	3.1 NM
CATEGORY	A	B	C
S-ILS 4L	CAT II RA 101/12 100 DA 745		
S-ILS 4L	CAT III RVR 600		

CATEGORY II & III ILS - SPECIAL AIRCREW & AIRCRAFT CERTIFICATION REQUIRED

TDZ/CL Rwy 3R, 4L, 4R and 22R

REIL Rwy 3L, 9L, 9R and 21R

HIRL all runways

EC-1, 31 DEC 2020 to 28 JAN 2021

EC-1, 31 DEC 2020 to 28 JAN 2021