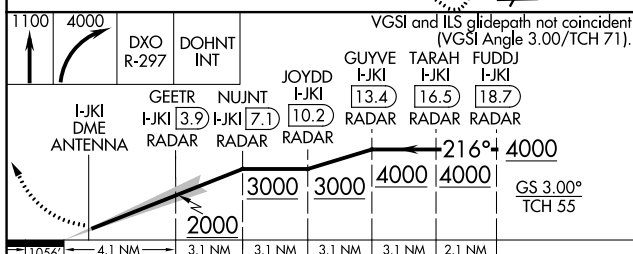
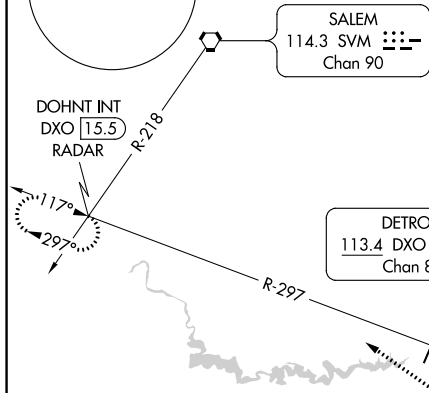
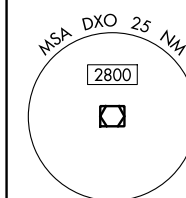
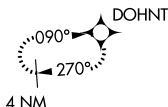


20254

ILS PRM Z RWY 22R (SA CAT I & II)
(CLOSE PARALLEL)

MALSR
A5

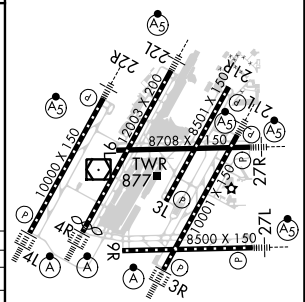
MISSED APPROACH: Climb to 1100 then climbing right turn to 4000 on DXO VOR/DME R-297 to DOHNT INT/DXO 15.5 DME/RADAR and hold.

ALTERNATE MISSED APCH FIX

CATEGORY	A	B	C	D
S-ILS 22R	SA CAT I	RA 148/14	150 DA 792	
S-ILS 22R	SA CAT II	RA 98/12	100 DA 742	

SA CATEGORY I & II ILS - SPECIAL AIRCREW
& AIRCRAFT CERTIFICATION REQUIRED

ELEV	645	D	TDZE	642
------	-----	----------	------	-----



TDZ/CL Rwy 3R, 4L, 4R and 22R
REIL Rwy 3L, 9L, 9R and 21R
HIRL all Rwy

DETROIT METROPOLITAN WAYNE COUNTY (DTW)

ILS PRM Z RWY 22R (SA CAT I & II) (CLOSE PARALLEL)

EC-1, 31 DEC 2020 to 28 JAN 2021