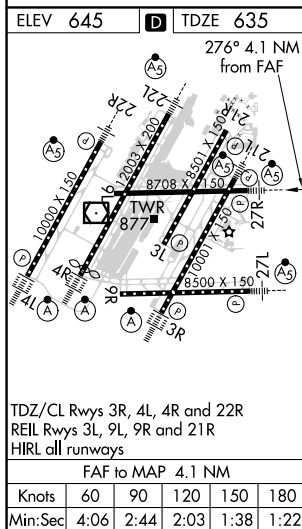
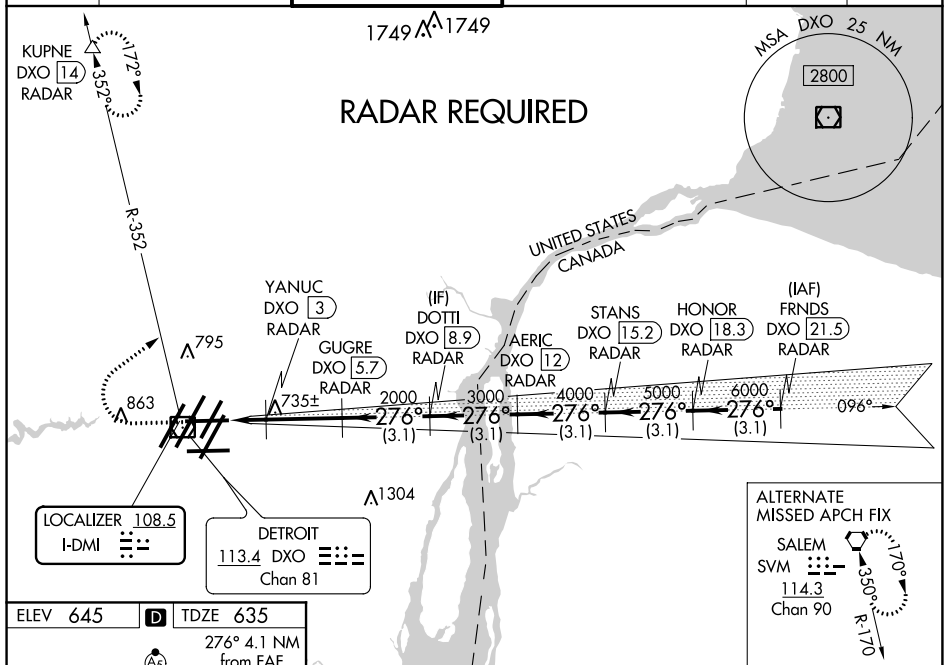


ILS or LOC RWY 27R
DETROIT METROPOLITAN WAYNE COUNTY (DTW)

MALSR

MISSED APPROACH: Climb to 1100 then climbing right turn to 4000 on DXO VOR/DME R-352 to KUPNE/DXO 14 DME/RADAR and hold, continue climb-in-hold to 4000.

D-ATIS 133.675	DETROIT APP CON 125.15 284.0	METRO TOWER 118.4 317.725	GND CON 121.8 (NW) 119.45 (NE) 132.725 (SW) 119.25 (SE)	CLNC DEL 120.65	CPDLC
-------------------	---------------------------------	------------------------------	---	--------------------	-------



1100 ↑	4000 ↷	DXO R-352	KUPNE △	VGSI and ILS glidepath not coincident (VGSI Angle 3.00/TCH 61).									
*LOC only.				<div><div><div>YANUC DXO [3] RADAR</div><div>DXO [1.6]</div></div><div><div>GUGRE DXO [5.7] RADAR</div><div>2000</div></div><div><div>DOTTI DXO [8.9] RADAR</div><div>3000</div></div><div><div>AERIC DXO [12] RADAR</div><div>4000</div></div><div><div>STANS DXO [15.2] RADAR</div><div>5000</div></div><div><div>HONOR DXO [18.3] RADAR</div><div>6000</div></div><div><div>FRNDS DXO [21.5] RADAR</div></div></div> <div><div>276°</div><div>7000</div></div> <div><div>GS 3.00° TCH 50</div></div>									
CATEGORY	A			B			C			D			
S-ILS 27R	** 835/24 200 (200-½)												
S-LOC 27R	1000/24 365 (400-½)						1000/35 365 (400-¾)						
C CIRCLING	1180-1 535 (600-1)						1180-1½ 535 (600-1½)			1240-2 595 (600-2)			