

LOC/DME I-EJR 111.5 Chan 52	APP CRS 216°	Rwy Idg TDZE 632 Apt Elev 645
---	------------------------	---

ILS or LOC RWY 21L

DETROIT METROPOLITAN WAYNE COUNTY (DTW)

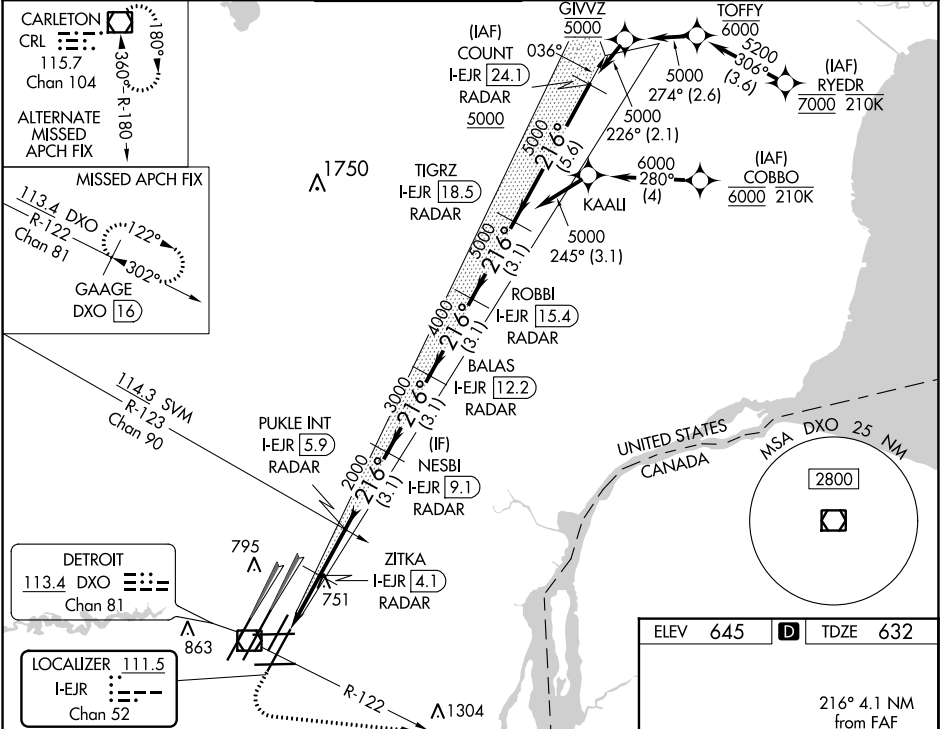
From RYEDR, COBBO: RNAV 1-DME/DME/IRU or GPS required. Aircraft not DME/DME/IRU or GPS equipped - RADAR required for procedure entry. DME or RADAR required.

Simultaneous approach authorized.
**RVR 1800 authorized with use of FD or AP or HUD to DA.

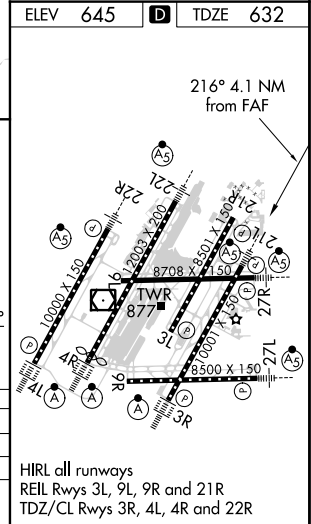


MISSED APPROACH: Climb to 1100 then climbing left turn to 4000 on DXO R-122 to GAAGE/DXO 16 DME and hold, continue climb-in-hold to 4000.

D-ATIS 133.675	DETROIT APP CON 125.15 284.0	METRO TOWER 118.4 317.725	GND CON 121.8 (NW) 119.45 (NE) 132.725 (SW) 119.25 (SE)	CLNC DEL 120.65	CPDLC
--------------------------	--	-------------------------------------	---	---------------------------	-------



1100	4000	DXO R-122	GAAGE DXO 16	VGSI and ILS glidepath not coincident (VGSI Angle 3.00/TCH 80).	ROBBI I-EJR 15.4 RADAR	TIGRZ I-EJR 18.5 RADAR
* LOC only	ZITKA I-EJR 4.1 RADAR	PUKLE INT I-EJR 5.9 RADAR	NESBI I-EJR 9.1 RADAR	BALAS I-EJR 12.2 RADAR	I-EJR 1.8	I-EJR 2.8
					2000	2000
					3000	3000
					4000	4000
					5000	5000
					GS 3.00° TCH 55	
					1 NM	1.3 NM
					1.8 NM	3.1 NM
					3.1 NM	3.1 NM
					3.1 NM	3.1 NM
					3.1 NM	3.1 NM
CATEGORY	A	B	C	D		
S-ILS 21L **		832/24	200 (200-½)			
S-LOC 21L	1020/24	388 (400-½)	1020/35	388 (400-½)		
CIRCLING	1180-1	535 (600-1)	1180-1½ 535 (600-1½)	1240-2 595 (600-2)		



EC-1, 31 DEC 2020 to 28 JAN 2021

EC-1, 31 DEC 2020 to 28 JAN 2021