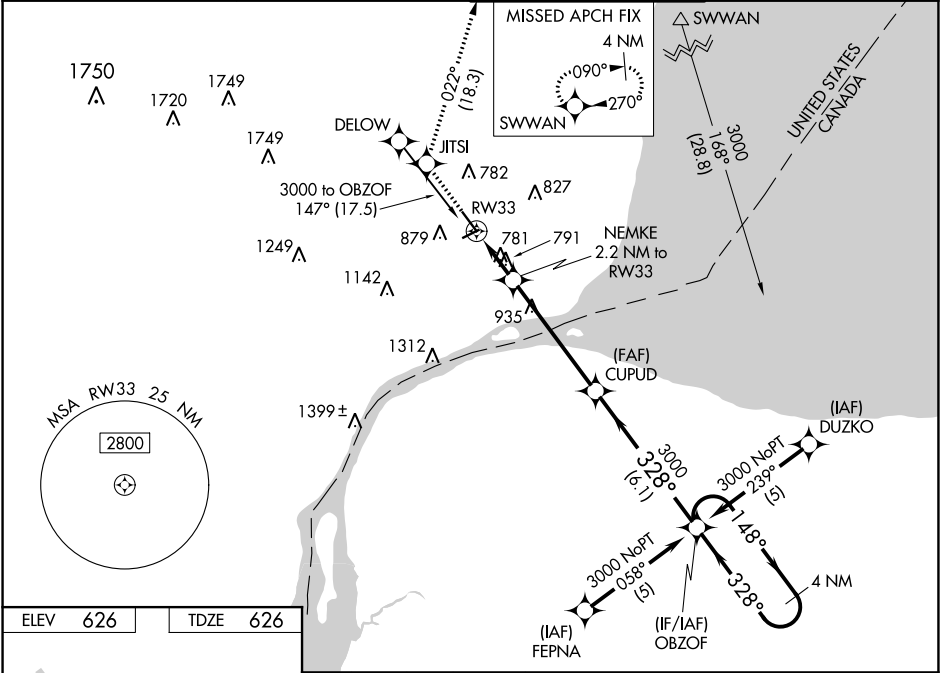


WAAS CH <b>58211</b> <b>W33A</b>	APP CRS <b>328°</b>	Rwy Idg TDZE Apt Elev	<b>5092</b> <b>626</b> <b>626</b>
--	------------------------	-----------------------------	---

**RNAV (GPS) RWY 33**  
COLEMAN A YOUNG MUNI (DET)

<p><b>⚠</b> Circling to Rwy 7, 25 NA at night. For uncompensated Baro-VNAV systems, LNAV/VNAV NA below -16°C (4°F) or above 48°C (118°F). Rwy 33 helicopter visibility reduction below ¾ SM NA. DME/DME RNP-0.3 NA.</p>	<p><b>MISSED APPROACH:</b> Climb to 4000 direct JITS1 and on track 022° to SWWAN and hold.</p>
---	--

ATIS <b>124.875</b>	DETROIT APP CON <b>134.3 284.0</b>	DETROIT CITY TOWER <b>121.3 257.8</b>	GND CON <b>121.85</b>
------------------------	---------------------------------------	--	--------------------------



MIRM Rwy 7-25  
HIRM Rwy 15-33  
REIL Rwy 15 and 33

4000

JITS1

tr 022°

SWWAN

\* LNAV only

NEMKE  
2.2 NM to RW33

\* 1.3 NM to RW33

CUPUD  
3000

OBZOF

4 NM Holding Pattern

1.3 NM

0.9 NM

5 NM

6.1 NM

328°

148°

3000

GP 3.00°  
TCH 51

CATEGORY	A		B	C	D
LPV DA	936-1 310 (400-1)				
LNAV/VNAV DA	1039-1½ 413 (500-1½)				
LNAV MDA	1100-1	474 (500-1)	1100-1¼ 474 (500-1¼)	1100-1½ 474 (500-1½)	
<b>C</b> CIRCLING	1180-1	554 (600-1)	1320-2 694 (700-2)	1500-2¾ 874 (900-2¾)	

EC-1, 31 DEC 2020 to 28 JAN 2021

EC-1, 31 DEC 2020 to 28 JAN 2021