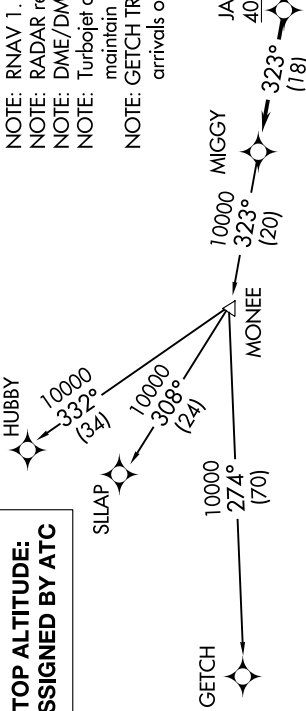


TOP ALTITUDE:
ASSIGNED BY ATC



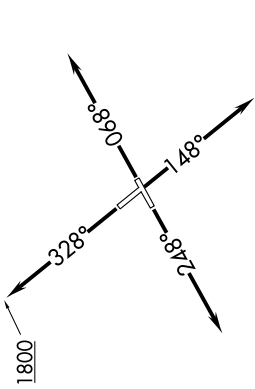
- NOTE: RNAV 1.
- NOTE: RADAR required.
- NOTE: DME/DME/IRU or GPS required.
- NOTE: Turbojet departures at/above 10000, maintain 280K until advised by ATC.
- NOTE: GETCH TRANSITION: For use by KMKC area arrivals only, or as assigned by ATC.

ATIS 124.875
GND CON 121.85
DETROIT CITY TOWER 121.3 257.8
DETROIT DEP CON 134.3 284.0

DEPARTURE ROUTE DESCRIPTION

TAKEOFF RUNWAY 7: Climb on heading 068° or as assigned for RADAR vectors to cross JAXII at or above 4000, thence....
TAKEOFF RUNWAY 15: Climb on heading 148° or as assigned for RADAR vectors to cross JAXII at or above 4000, thence....
TAKEOFF RUNWAY 25: Climb on heading 248° or as assigned for RADAR vectors to cross JAXII at or above 4000, thence....
TAKEOFF RUNWAY 33: Climb on heading 328° to 1800 then as assigned for RADAR vectors to cross JAXII at or above 4000, thence....
....on track 323° to MIGGY, then on (transition). Maintain ATC assigned altitude, expect filed altitude 10 minutes after departure.

GETCH TRANSITION (MIGGY2.GETCH):
HUBBY TRANSITION (MIGGY2.HUBBY):
SLAP TRANSITION (MIGGY2.SLAP):



TAKEOFF MINIMUMS:
Rwys 7, 15, 33: Standard.
Rwy 25: Standard with minimum climb of 210' per NM to 1000.



NOTE: Chart not to scale.