

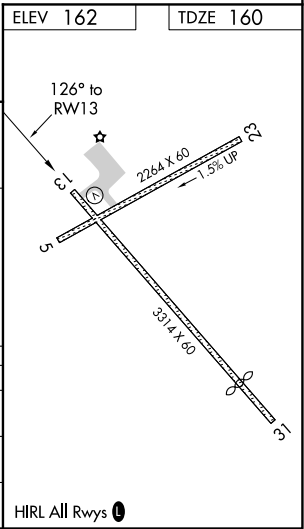
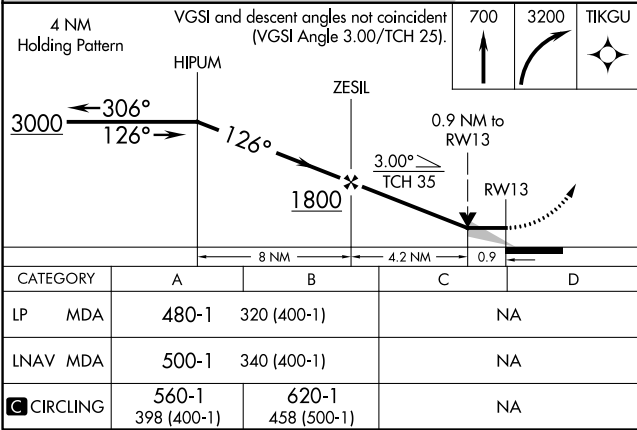
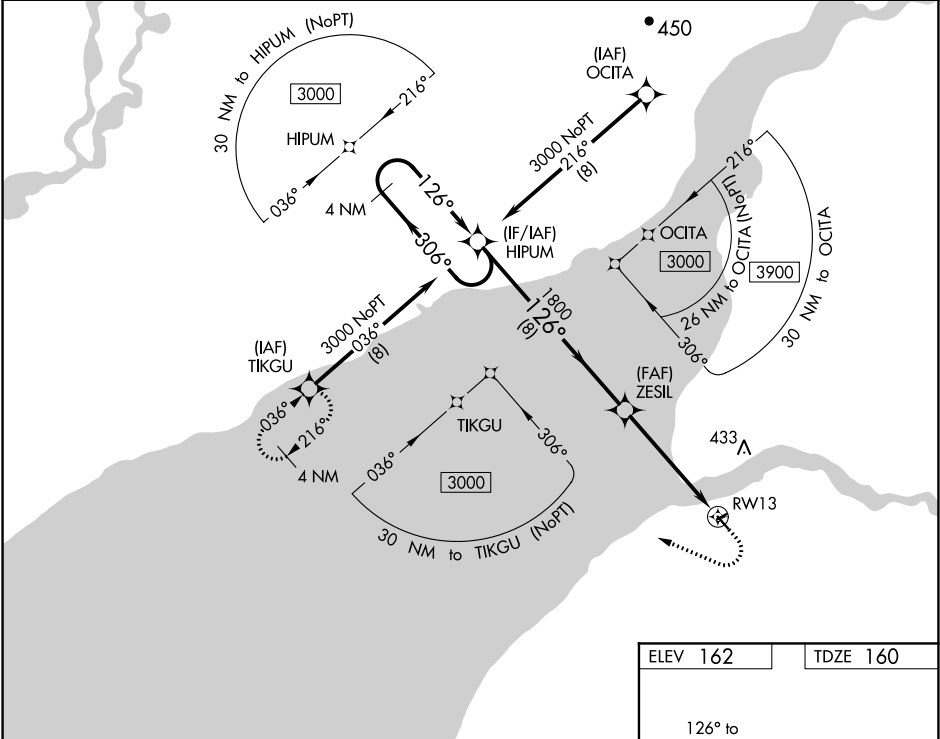
WAAS CH <b>42937</b> <b>W13A</b>	APP CRS <b>126°</b>	Rwy Idg <b>3314</b> TDZE <b>160</b> Apt Elev <b>162</b>
--	------------------------	---

RNAV (GPS) RWY 13

SOUTH NAKNEK NR 2 (WSN)(PFWS)

RNP APCH.	MISSED APPROACH: Climb to 700 then climbing right turn to 3200 direct TIKGU and hold.
▼ When local altimeter setting not received, use King Salmon altimeter setting and increase all MDA 40 feet. Circling Rwy 5 NA at night. VDP NA when using King Salmon altimeter setting.	

AWOS-3P <b>121.575</b>	ANCHORAGE CENTER <b>124.8 354.0</b>	CTAF <b>122.9 0</b>
---------------------------	--	------------------------



AK, 31 DEC 2020 to 25 FEB 2021

AK, 31 DEC 2020 to 25 FEB 2021