


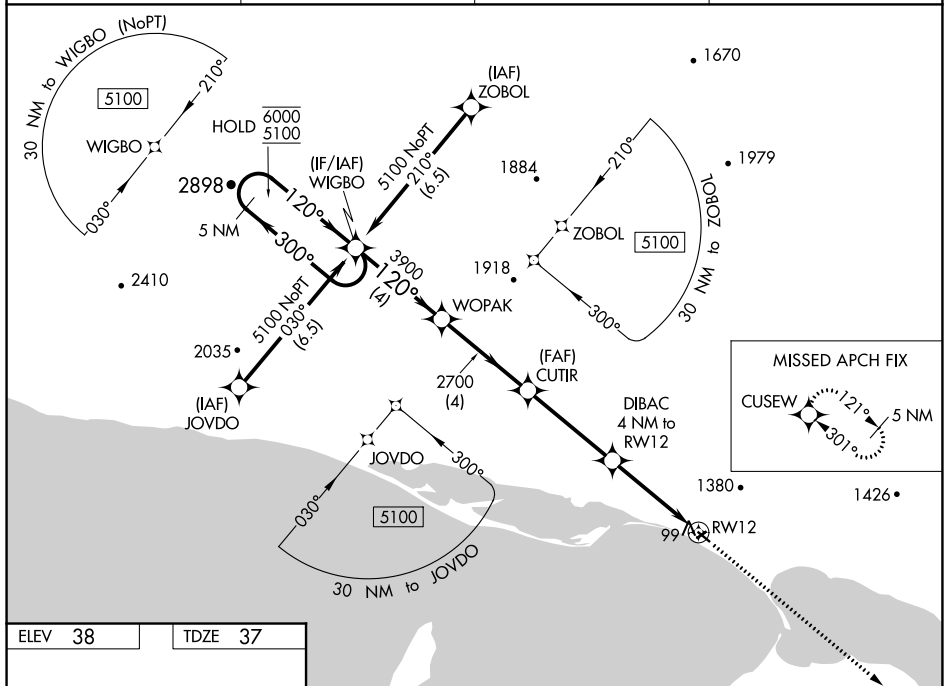
RNAV (GPS) RWY 12

BREVIG MISSION (KTS) (PFKT)

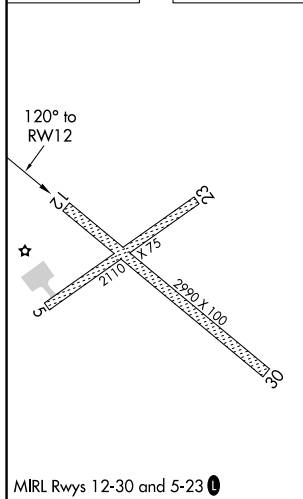
 Circling NA north of Rwy 12 and 23. Circling Rwy 23 NA at night.
 -26°C For uncompensated Baro-VNAV systems, LNAV/VNAV NA below -25°C or above 54°C.

MISSED APPROACH: Climb to 6300 direct CUSEW and hold, continue climb-in-hold to 6300.

AWOS-3P 121.55	ANCHORAGE CENTER 133.3 290.4	NOME RADIO 135.6	CTAF 123.0
--------------------------	----------------------------------------	----------------------------	----------------------



ELEV 38		TDZE 37
---------	--	---------



5 NM Holding Pattern

WIGBO

WOPAK

CUTIR

DIBAC
4 NM to RW12

RW12

GP 3.00°
TCH 40

6000 ← 300°

5100 → 120°

3000

2700

1360

0.9

4 NM

4 NM

3.9 NM

3.1 NM

*LNAV only.

*0.9 NM to RW12

CATEGORY	A	B	C	D
LPV DA	287-1	250 (300-1)		NA
LNAV/ VNAV	287-1	250 (300-1)		NA
LNAV MDA	360-1	323 (400-1)		NA
C CIRCLING	620-1 582 (600-1)	1460-1½ 1422 (1500-1½)		NA