

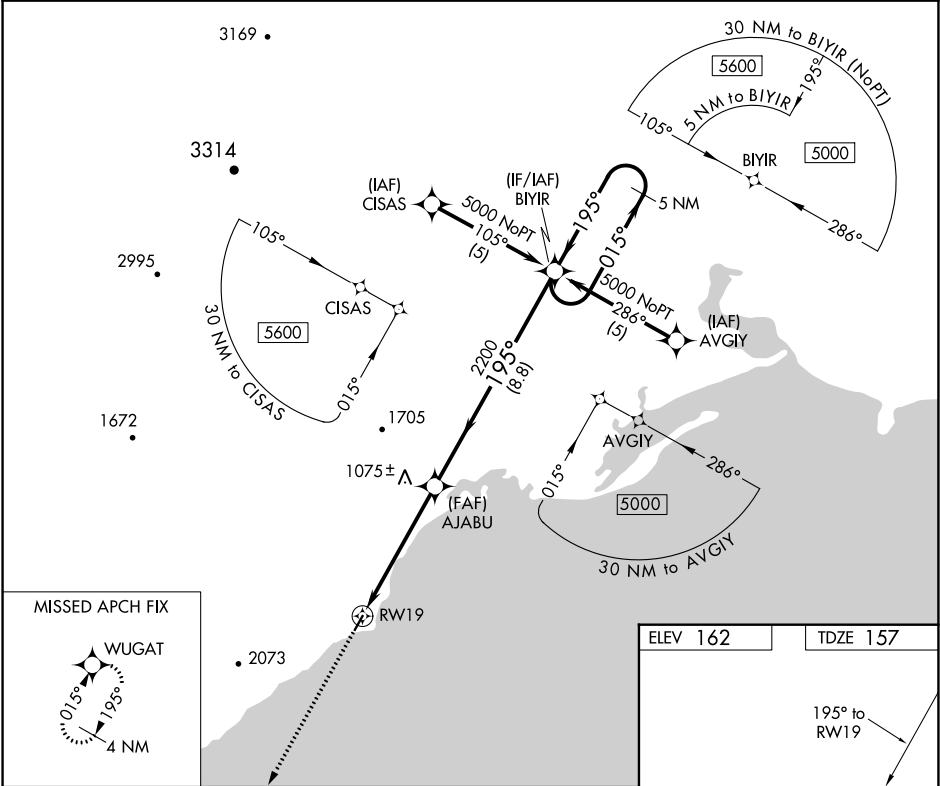
APP CRS	Rwy Idg	3401
195°	TDZE	157
	Apt Elev	162






RNAV (GPS) RWY 19

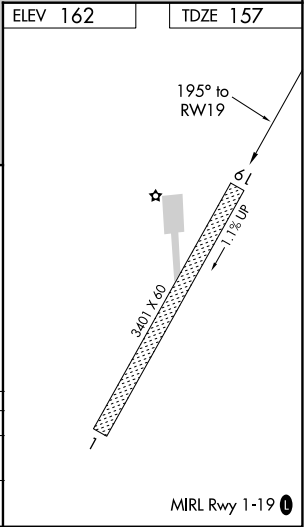
ELIM (ELI) (PFEL)

NA -29°C	DME/DME RNP- 0.3 NA. When local altimeter setting not received, use Koyuk altimeter setting. Rwy 19 Straight-in/Circling minimums NA at night. Helicopter visibility reduction below 1 SM NA.	MISSED APPROACH: Climb to 4000 direct WUGAT and hold.
--------------------	---	---

KKA/PAKK AWOS-3 134.95	AWOS-3P 121.425	ANCHORAGE CENTER 133.3 290.4	NOME RADIO 122.15	CTAF 122.8
----------------------------------	---------------------------	--	-----------------------------	----------------------



4000	WUGAT	Visual Segment - Obstacles.			
					
		AJABU	BIYIR	5 NM Holding Pattern	
				015° → 5000	
				← 195°	
				195°	
		2200			
		5.3 NM	8.8 NM		
CATEGORY	A	B	C	D	
LNAB MDA	1420-1¼ 1263 (1300-1¼)	1420-1½ 1263 (1300-1½)	NA		
CIRCLING	1420-1¼ 1258 (1300-1¼)	1420-1½ 1258 (1300-1½)	NA		



AK, 31 DEC 2020 to 25 FEB 2021

AK, 31 DEC 2020 to 25 FEB 2021