

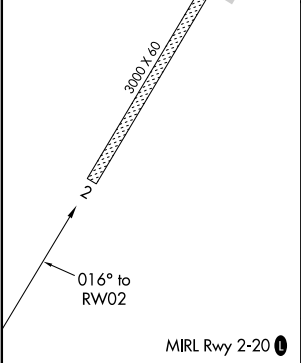
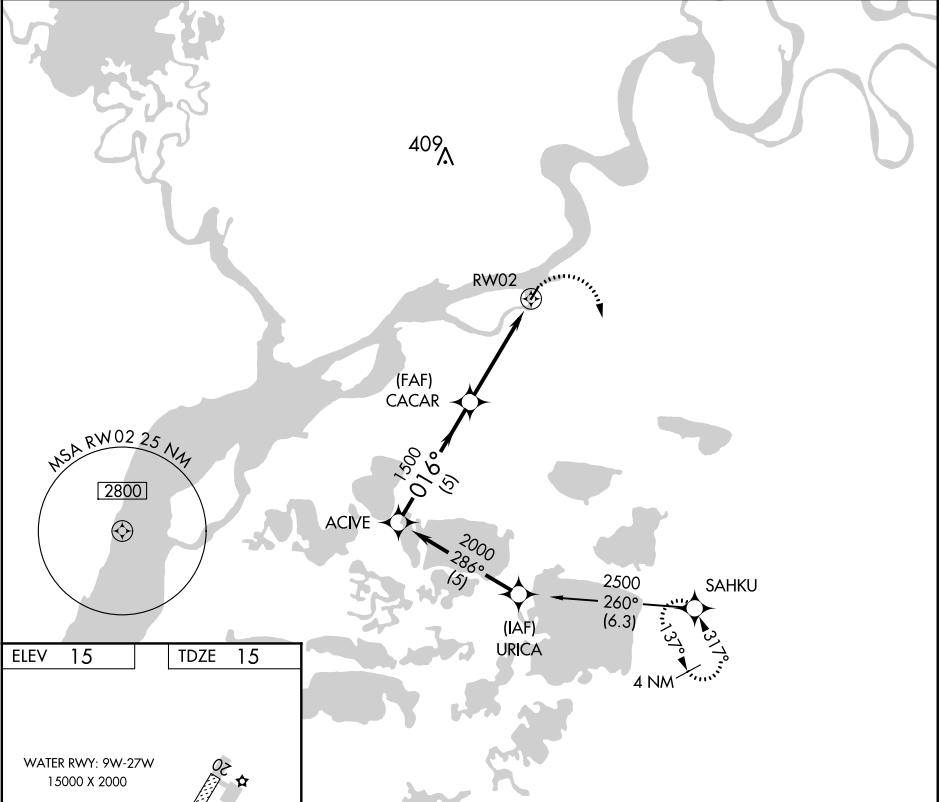
APP CRS	Rwy Idg	3000
016°	TDZE	15
	Apt Elev	15

RNAV (GPS) RWY 2

NAPASKIAK (PKA) (PAPK)

<div><div><div>▼</div><div>▲</div></div><div>NA</div></div> <div>Use Bethel altimeter setting. GPS or RNP-0.3 required. DME/DME RNP-0.3 NA.</div>	MISSED APPROACH: Climbing right turn to 2500 direct SAHKU WP and hold.
---	---

BET/PABE ASOS 135.45	ANCHORAGE CENTER 125.2 372.0	CTAF 122.9 
-------------------------	---------------------------------	---



Procedure	Turn	NA	2500	SAHKU
ACTIVE				
2000	016°	CACAR	3.17° TCH 40	1.1 NM to RW02
1500				RW02
	5 NM	3.2 NM	1.1	
CATEGORY	A	B	C	D
LNAV MDA	420-1	405 (500-1)	NA	
CIRCLING	420-1 405 (500-1)	480-1 465 (500-1)	NA	