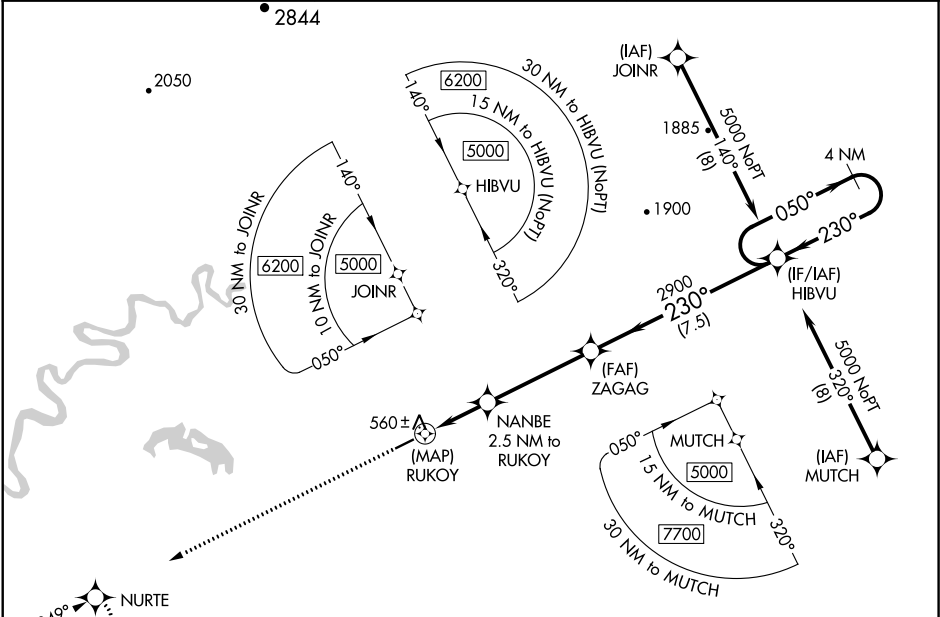


APP CRS	Rwy Idg	4001
230°	TDZE	448
	Apt Elev	448

RNAV (GPS) RWY 23
NIKOLAI (FSP)(PAFS)

RNP APCH.	MISSED APPROACH: Climb to 3000 direct NURTE and hold.
Rwy 23 helicopter visibility reduction below ¾ SM NA.	

AWOS-3P 118.325	ANCHORAGE CENTER 128.1 353.8	CTAF 122.8
--------------------	---------------------------------	---------------



ELEV 448	TDZE 448
3000 NURTE VGSI and descent angles not coincident (VGSI Angle 3.20/TCH 28).	
NANBE 2.5 NM to RUKOY ZAGAG HIBVU 4 NM Holding Pattern	
0.5 NM to RUKOY 050° 230° 5000	
RUKOY 1500 2900	
0.5 0.5 2 NM 4.1 NM 7.5 NM	
CATEGORY	A B C D
LNAV MDA	820-1 372 (400-1)
CIRCLING	860-1 900-1 900-1½ 1000-2 412 (500-1) 452 (500-1) 452 (500-1½) 552 (600-2)
MIRL Rwy 5-23 REIL Rws 5 and 23	