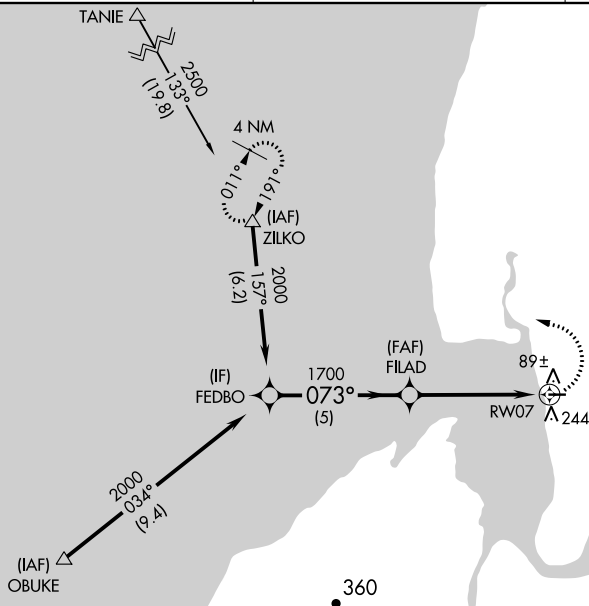
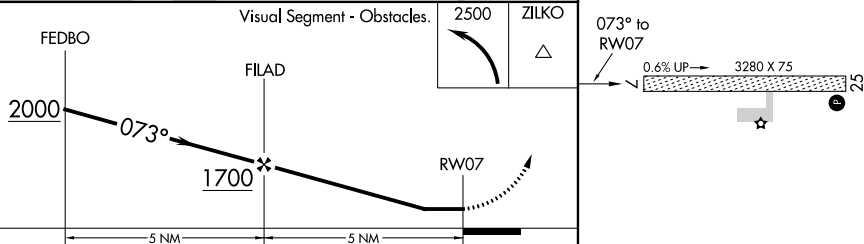


RNAV (GPS) RWY 7  
PILOT POINT (PNP)(PAPN)

**MISSED APPROACH:** Climbing left turn to 2500 direct ZILKO and hold.

CTAF  
122.9 **L**TDZE 57

| CATEGORY | A     | B           | C  | D |
|----------|-------|-------------|----|---|
| LNAV MDA | 520-1 | 463 (500-1) | NA |   |
| CIRCLING | 600-1 | 543 (600-1) | NA |   |

MIRL Rwy 7-25 **L**

AK, 31 DEC 2020 to 25 FEB 2021