

WAAS CH <b>69413</b> <b>W33A</b>	APP CRS <b>327°</b>	Rwy Idg TDZE <b>24</b> Apt Elev <b>24</b>	<b>4001</b>
--	------------------------	---	-------------

RNAV (GPS) RWY 33

SHAKTOOLIK (2C7) (PFSH)

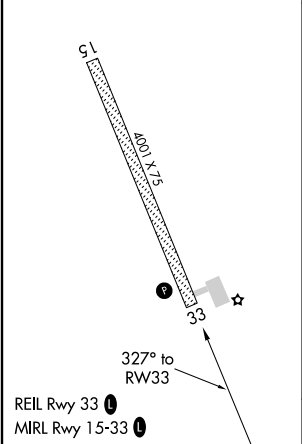
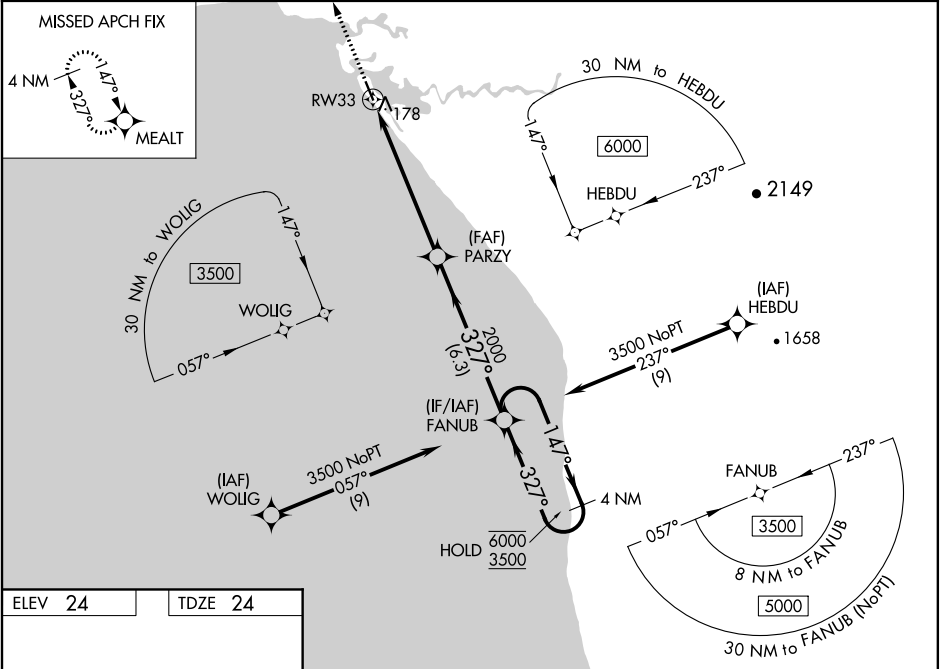
RNP APCH.

Baro-VNAV and VDP NA when using Unalakleet altimeter setting. For uncompensated Baro-VNAV systems, LNAV/VNAV NA below -20°C or above 54°C. When local altimeter setting not received, use Unalakleet altimeter setting and increase all DA 72 feet and all MDA 80 feet and increase LNAV/VNAV all Cals visibility 1/8 SM and LNAV Cat C and D and Circling Cat D visibility 1/4 SM.

-35°C

MISSED APPROACH: Climb to 3000 direct MEALT and hold.

AWOS-3P <b>124.175</b>	ANCHORAGE CENTER <b>135.7 335.5</b>	NOME RADIO <b>122.3</b>	UNICOM <b>122.8 (CTAF) 0</b>
---------------------------	--	----------------------------	---------------------------------



3000	MEALT	VGSI and RNAV glidepath not coincident (VGSI Angle 3.00/TCH 25).			
*LNAV only.		PARZY	FANUB		
		2000	4 NM Holding Pattern		
		1.2 NM to RW33	147° → 6000		
			← 327° 3500		
			GP 3.00°		
			TCH 40		
			1.2 NM 4.9 NM 6.3 NM		
CATEGORY	A	B	C	D	
LPV DA	274-1 250 (300-1)				
LNAV/VNAV DA	339-1 315 (400-1)				
LNAV MDA	440-1	416 (500-1)	440-1 1/8	416 (500-1 1/8)	
CIRCLING	480-1	456 (500-1)	480-1 1/2	740-2 1/4	
			456 (500-1 1/2)	716 (800-2 1/4)	