

APP CRS
031°

Rwy Idg
TDZE
Apt Elev

4000
648
658

RNAV (GPS) RWY 3

RUBY (RBY) (PARY)

▼

▲

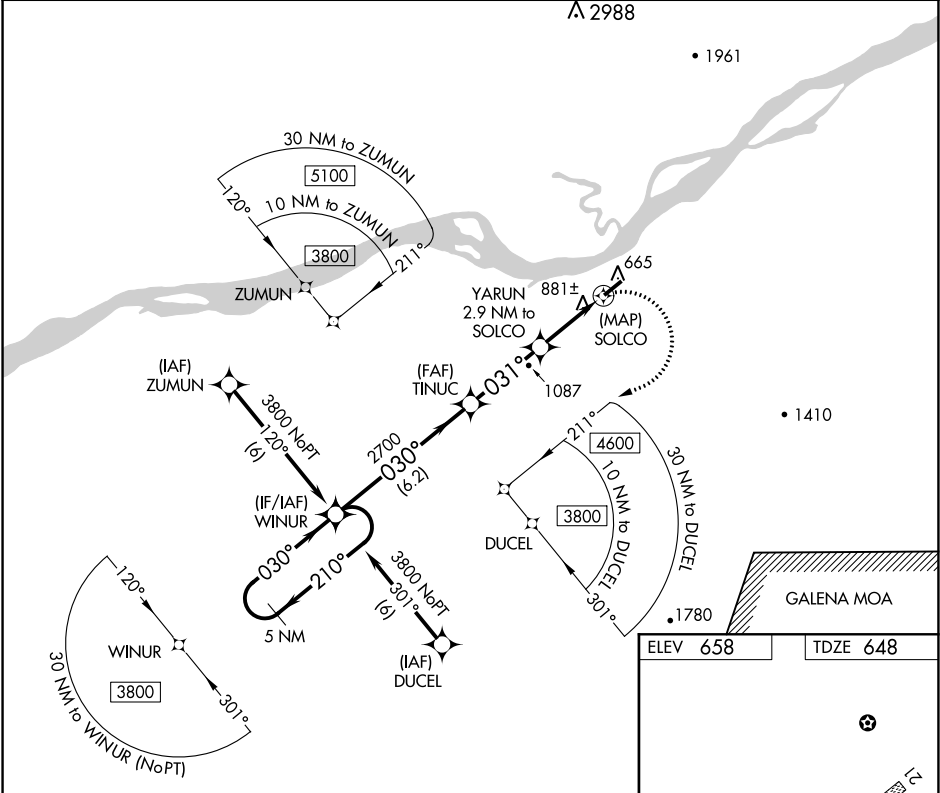
✳

-40°C

When local altimeter setting not received, use Galena altimeter setting and increase all MDA 340 feet, increase LNAV and Circling Cat A visibility ¼ mile, Cat B ½ mile and Cat C 1 ¼ mile. DME/DME RNP-0.3 NA. Rwy 3 Straight-in and Circling minimums NA at night. Helicopter visibility reduction below 1 SM NA.

MISSED APPROACH:
Climbing right turn to 3800 direct WINUR and hold.

| | | | |
|-------------------|---------------------------------|---------------------------|---------------|
| AWOS-3P 118.25 | ANCHORAGE CENTER 127.0 290.2 | FAIRBANKS RADIO 122.25 | CTAF 122.8 |
|-------------------|---------------------------------|---------------------------|---------------|



| | | | | | |
|----------------------|--------|-----------------------------|-------------------------|-----------------------|--------|
| 5 NM Holding Pattern | | Visual Segment - Obstacles. | | 3800 | WINUR |
| 3800 ← 210° | | TINUC | | YARUN 2.9 NM to SOLCO | SOLCO |
| → 030° | | 2700 | | 1800 | |
| | | 6.2 NM | | 3.2 NM | 2.9 NM |
| CATEGORY | A | B | C | D | |
| LNAV MDA | 1260-1 | 612 (700-1) | 1260-1¾ 612 (700-1¾) | NA | |
| CIRCLING | 1260-1 | 602 (700-1) | 1260-1¾ 602 (700-1¾) | NA | |

