

WAAS CH <b>42714</b> <b>W06A</b>	APP CRS <b>062°</b>	Rwy Idg TDZE Apt Elev	<b>4000</b> <b>149</b> <b>149</b>
--	------------------------	-----------------------------	---

RNAV (GPS) RWY 6

KOYUKUK (KYU) (PFKU)

RNP APCH.

▼

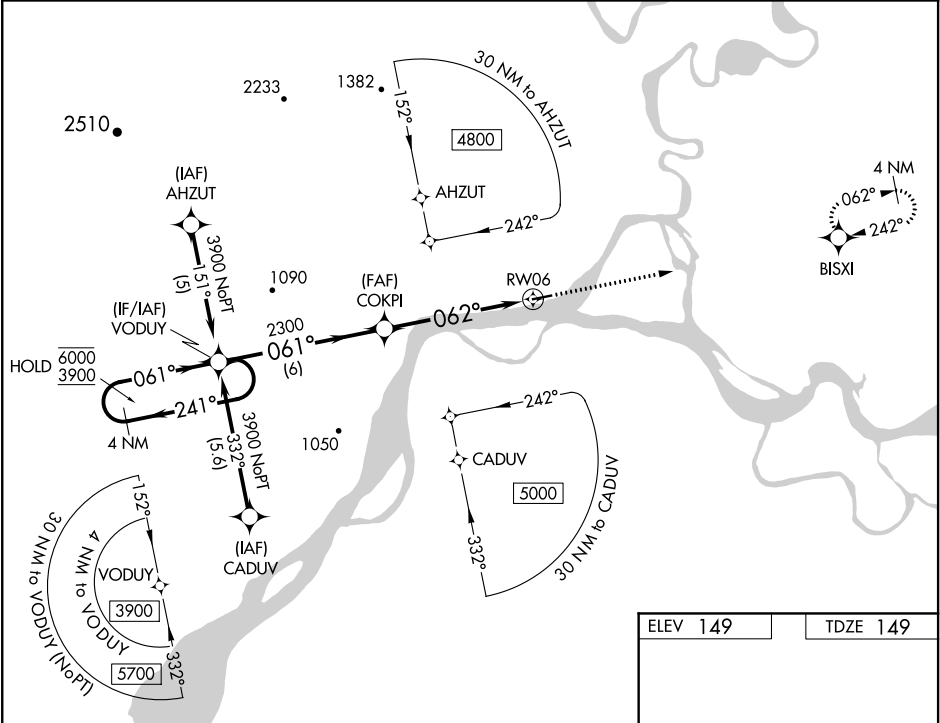
▲ NA

❄ -25°C

Circling Rwy 24 NA at night. Rwy 6 helicopter visibility reduction below ¾ NA. Use Galena altimeter setting, when not received, procedure NA.

MISSED APPROACH: Climb to 2500 direct BISXI and hold.

GAL/PAGA AWOS-3 <b>132.525</b>	ANCHORAGE CENTER <b>127.0 290.2</b>	CTAF <b>122.9 0</b>
-----------------------------------	--	------------------------



4 NM Holding Pattern		VGSI and RNAV glidepath not coincident (VGSI Angle 4.00/TCH 29°).		2500	BISXI
GP 3.70° TCH 55		6 NM		5.4 NM	
CATEGORY	A	B	C	D	
LPV DA	579-1¼ 430 (500-1¼)			NA	
LNAV MDA	1 220-1¼ 1071 (1 100-1¼)	1 220-1½ 1071 (1 100-1½)	1 220-3 1071 (1 100-3)	NA	
CIRCLING	1 220-1¼ 1071 (1 100-1¼)	1 220-1½ 1071 (1 100-1½)	1 220-3 1071 (1 100-3)	NA	