

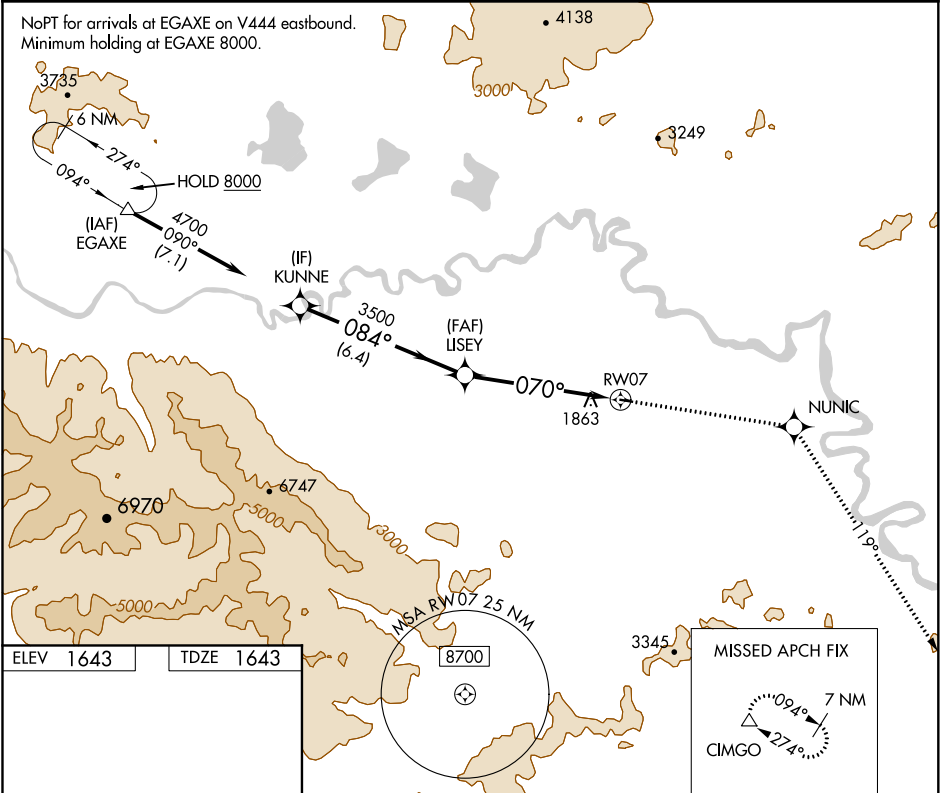
APP CRS	Rwy Idg	2509
070°	TDZE	1643
	Apt Elev	1643

RNAV (GPS) RWY 7

TOK JUNCTION (6K8) (PFTO)

<div><div><div>▼</div><div>NA</div></div></div> <div>DME/DME RNP-0.3 NA. Use Northway altimeter setting.</div>	MISSED APPROACH: Climb to 8000 direct NUNIC and via 119° track to CIMGO and hold, continue climb-in-hold to 8000.
--	---

ORT/PAOR ASOS 135.4	ANCHORAGE CENTER 126.55 323.0	NORTHWAY RADIO 122.4	UNICOM 122.8 (CTAF) 0
------------------------	----------------------------------	-------------------------	--------------------------



ELEV 1643	TDZE 1643	<div><div><div>8000</div><div>NUNIC</div><div>119° tr</div><div>CIMGO</div></div></div>			
<div><div><div>2509 X 50</div><div>070° to RW07</div></div></div>		<div><div><div>KUNNE</div><div>LUSEY</div><div>RW07</div></div><div><div>4700</div><div>084°</div><div>3500</div><div>070°</div><div>3.05°</div><div>TCH 40</div><div>6.4 NM</div><div>5.6 NM</div></div></div>			
CATEGORY		A	B	C	D
LNAV MDA		2500-1 857 (900-1)	2500-1¼ 857 (900-1¼)	2500-2½ 857 (900-2½)	NA
CIRCLING		2540-1¼	897 (900-1¼)	2540-2¾ 897 (900-2¾)	NA