

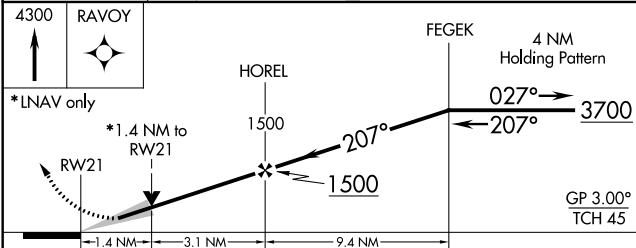
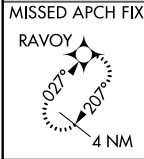
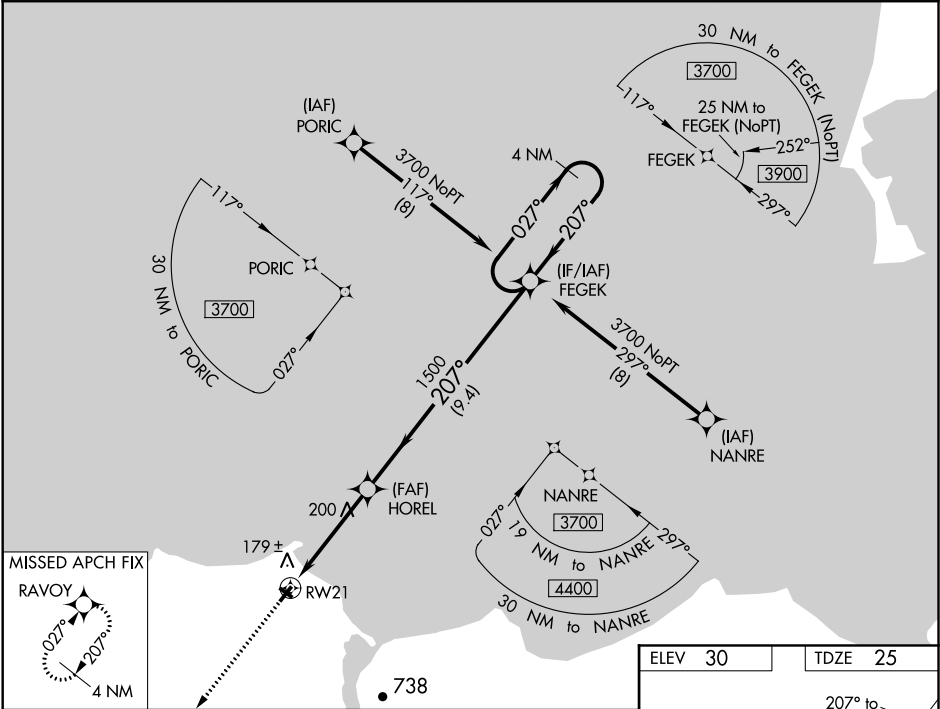
WAAS CH <b>56241</b> <b>W21A</b>	APP CRS <b>207°</b>	Rwy Idg <b>3320</b> TDZE <b>25</b> Apt Elev <b>30</b>
--	------------------------	---

RNAV (GPS) RWY 21

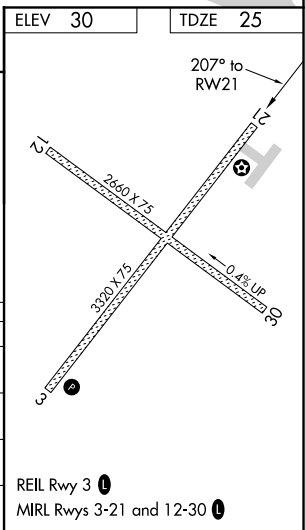
DEERING (DEE)(PADE)

<div><div><div><div></div><div></div><div></div></div><div><div></div><div></div><div></div></div></div><div><div></div><div></div><div></div></div></div> <div>Circling to Rwy 12, 30 NA at night. For uncompensated Baro-VNAV systems, LNAV/VNAV NA below -19°C (-2°F) or above 54°C (130°F). DME/DME RNP-0.3 NA.</div>	MISSED APPROACH: Climb to 4300 direct RAVOY and hold, continue climb-in-hold to 4300.
---	---

ASOS <b>135.5</b>	ANCHORAGE CENTER <b>119.2 263.0</b>	KOTZEBUE RADIO <b>122.25</b>	CTAF <b>122.9</b>
----------------------	--	---------------------------------	----------------------



CATEGORY	A	B	C	D
LPV DA	275-1	250 (300-1)		NA
LNAV/VNAV DA	332-1	307 (400-1)		NA
LNAV MDA	500-1	475 (500-1)	500-1 3/8 475 (500-1 3/8)	NA
CIRCLING	680-1 650 (700-1)	840-1 810 (900-1)	840-2 1/4 810 (900-2 1/4)	NA



AK, 31 DEC 2020 to 25 FEB 2021

AK, 31 DEC 2020 to 25 FEB 2021