



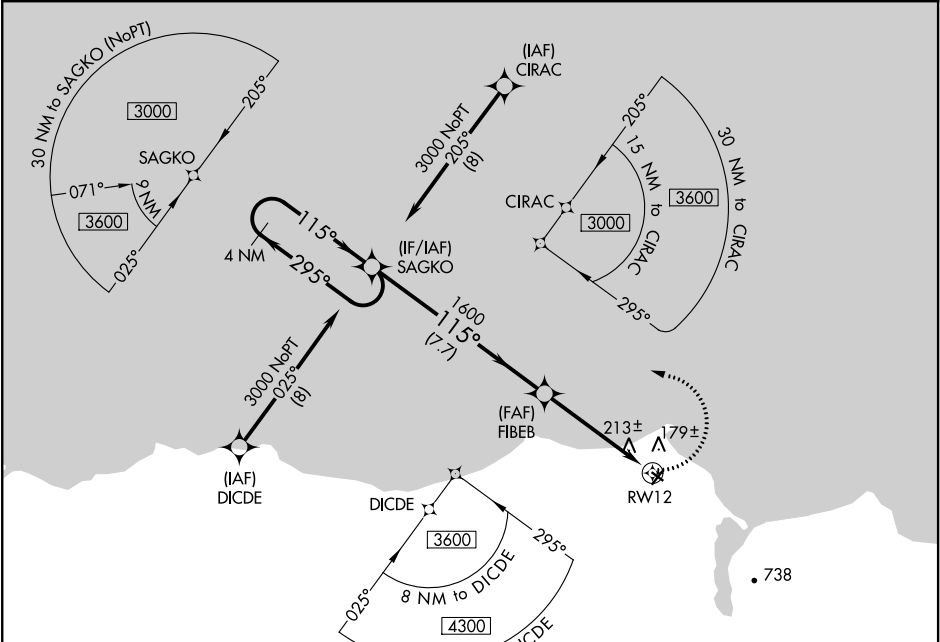
APP CRS	Rwy Idg	2660
115°	TDZE	30
	Apt Elev	30

RNAV (GPS) RWY 12

DEERING (DEE)(PADE)

 DME/DME RNP-0.3 NA. Rwy 12 helicopter visibility reduction below 1 SM NA.  -39°C Straight-in Rwy 12 NA at night, Circling Rwy 12, 30 NA at night.	MISSED APPROACH: Climbing left turn to 3000 direct SAGKO and hold.
--	--

ASOS 135.5	ANCHORAGE CENTER 119.2 263.0	KOTZEBUE RADIO 122.25	CTAF 122.9 
---------------	---------------------------------	--------------------------	---



30 NM to DIS

1693

1057

4 NM Holding Pattern

SAGKO

Visual Segment - Obstacles.

3000

SAGKO

295°

115°

115°

FIBEB

1600

RW12

7.7 NM

4.8 NM

ELEV 30

TDZE 30

115° to RW12

2660 X 75


3200 X 75

0.4% UP

30

REIL Rwy 3

MIRL Rws 3-21 and 12-30

CATEGORY	A	B	C	D
LNAV MDA	520-1	490 (500-1)	520-1 $\frac{3}{8}$ 490 (500-1 $\frac{3}{8}$)	NA
 CIRCLING	680-1 650 (700-1)	840-1 810 (900-1)	840-2 $\frac{1}{2}$ 810 (900-2 $\frac{1}{2}$)	NA