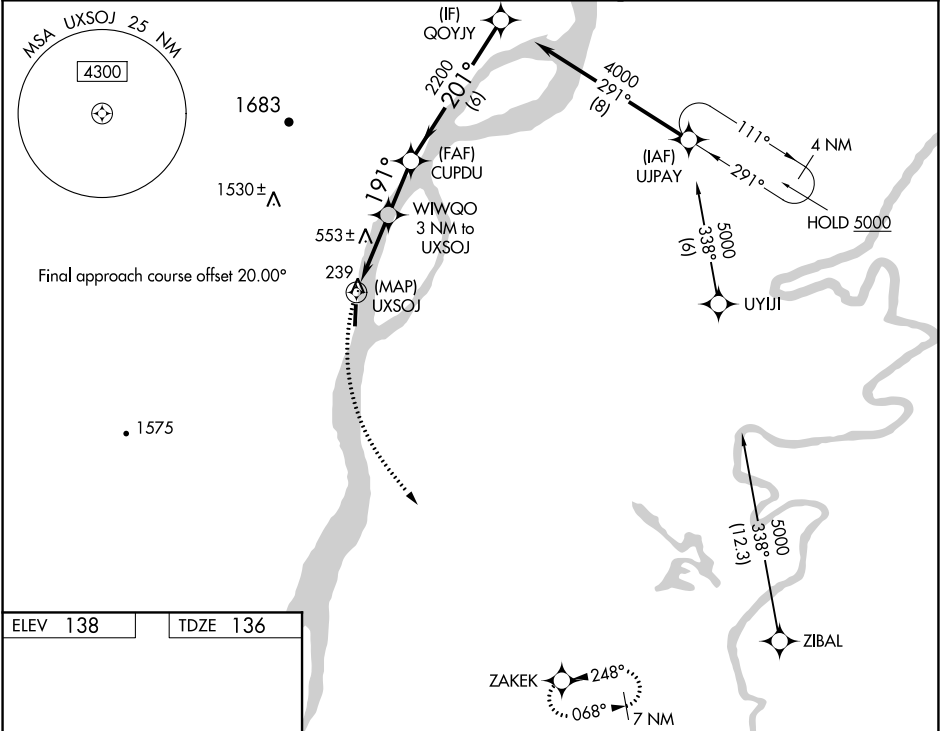


WAAS CH 93540 W17A	APP CRS 191°	Rwy Idg TDZE 136 Apt Elev 138	4000
--	------------------------	---	-------------

RNAV (GPS) RWY 17
GRAYLING (KGX)(PAGX)

RADAR required for procedure entry.		MISSED APPROACH: Climbing left turn to 7000 direct ZAKEK and hold, continue climb-in-hold to 7000.
Circling NA west of Rwy 17-35. Rwy 17 helicopter visibility reduction below ¾ SM NA. DME/DME RNP-0.3 NA. Use Shageluk altimeter setting; when not received, use Anvik altimeter setting.		

SHX/PAHX AWOS-3P 121.575	ANCHORAGE CENTER 118.15 251.05	KENAI RADIO 122.4	CTAF 122.9
------------------------------------	--	-----------------------------	----------------------



ELEV 138

TDZE 136

☆ Z1

4000 X 75

35

MIRL Rwy 17-35

7000 ZAKEK		WIWGO 3 NM to UXSOJ		CUPDU	QOYJY
		UXSOJ		2200	4000
		≤3.50° TCH 40			
		1420			
		0.5 3 NM 2.1 NM 6 NM			
CATEGORY	A	B	C	D	
LP MDA	860-1	724 (800-1)	1360-2 ½	1224 (1300-2 ½)	
LNAV MDA	1360-1 ¼	1360-1 ½	1360-3	1224 (1300-3)	
CIRCLING	1360-1 ¼	1360-1 ½	1360-3	1420-3	
	1222 (1300-1 ¼)	1222 (1300-1 ½)	1222 (1300-3)	1282 (1300-3)	

AK, 31 DEC 2020 to 25 FEB 2021

AK, 31 DEC 2020 to 25 FEB 2021