

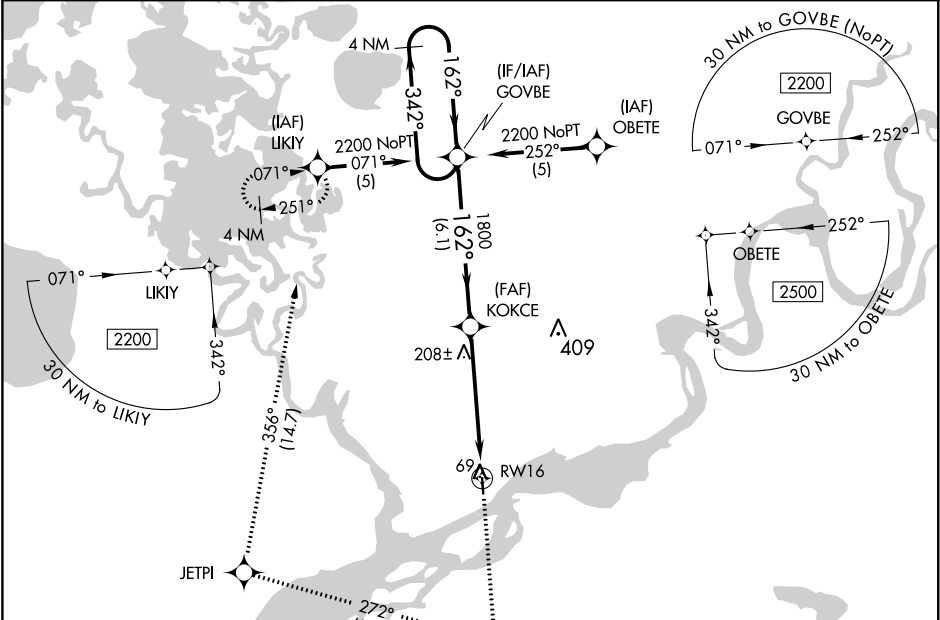
WAAS CH 69409 W16A	APP CRS 162°	Rwy Idg 3248 TDZE 17 Apt Elev 17
--	------------------------	---

RNAV (GPS) RWY 16

NAPAKIAK (WNA) (PANA)

<div><div><div>▼</div><div>▲ NA</div><div>▼</div><div>☼ -37°C</div></div></div> <div>DME/DME RNP-0.3 NA. When local altimeter setting not received, use Bethel altimeter setting. Rwy 16 helicopter visibility reduction 1 SM NA. Procedure NA at night for Cat C and D aircraft.</div> <div>MISSED APPROACH: Climb to 2200 direct CUGAV and right turn on track 272° to JETPI on track 356° to LIKIY and hold.</div>

AWOS-3P 121.425	ANCHORAGE CENTER 125.2 372.0	CTAF 122.9 0
---------------------------	--	------------------------



ELEV 17		TDZE 17	
4 NM Holding Pattern		2200 CUGAV	
GOVBE		JETPI	
2200 ← 342°		tr 272°	
← 162°		tr 356°	
GP 3.00°		VGSI and RNAV glidepath not coincident (VGSI Angle 3.00/TCH 26).	
TCH 30		KOKCE	
1800		RW16	
6.1 NM		5.4 NM	
CATEGORY	A	B	C
LPV DA	298-1 281 (300-1)		
LNAV MDA	500-1	483 (500-1)	500-1½ 483 (500-1½)
CIRCLING	500-1	483 (500-1)	580-2 563 (600-2)

REIL Rwy 16 and 34 0
MIRL Rwy 16-34 0