

APP CRS  
198°

Rwy Idg  
TDZE  
Apt Elev

4400  
15  
15

RNAV (GPS) RWY 20

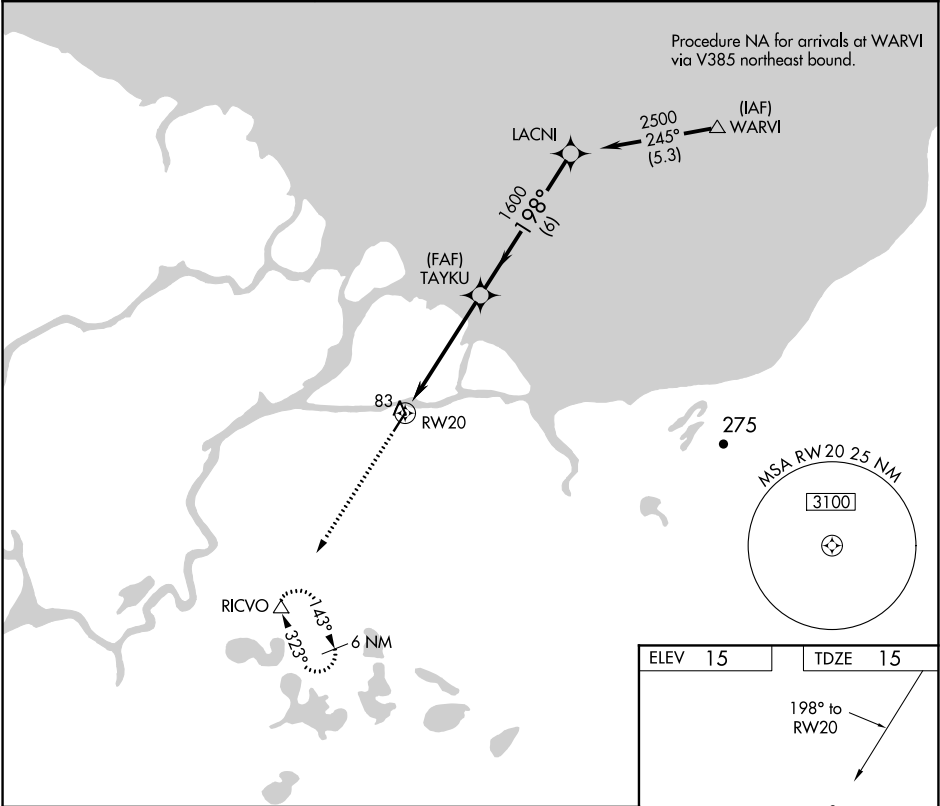
KOTLIK (2A9) (PFKO)

NA

DME/DME RNP-0.3 NA. Use Emmonak altimeter setting.  
Procedure NA at night.

MISSED APPROACH: Climb to 8000 direct RICVO WP and hold.

ENM/PAEM AWOS-3P 135.35	ANCHORAGE CENTER 124.5	CTAF 122.9
----------------------------	---------------------------	---------------



8000  
↑

RICVO  
△

RW20

TAYKU

LACNI

2500

1600

198°

2.91°

TCH 40

5 NM

6 NM

Procedure Turn NA

CATEGORY	A	B	C	D
LNAV MDA	440-1	425 (500-1)	NA	
CIRCLING	480-1	465 (500-1)	NA	

ELEV 15

TDZE 15

198° to RW20

4400 A 100

MIRL Rwy 2-20