

WAAS CH <b>86640</b> <b>W14A</b>	APP CRS <b>144°</b>	Rwy Idg TDZE <b>18</b> Apt Elev <b>18</b>	<b>5000</b>
--	------------------------	---	-------------

RNAV (GPS) RWY 14

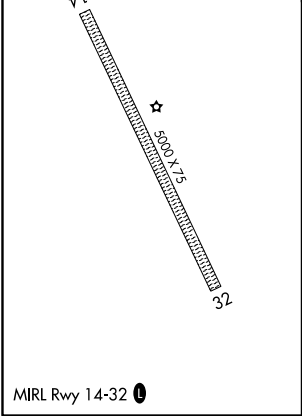
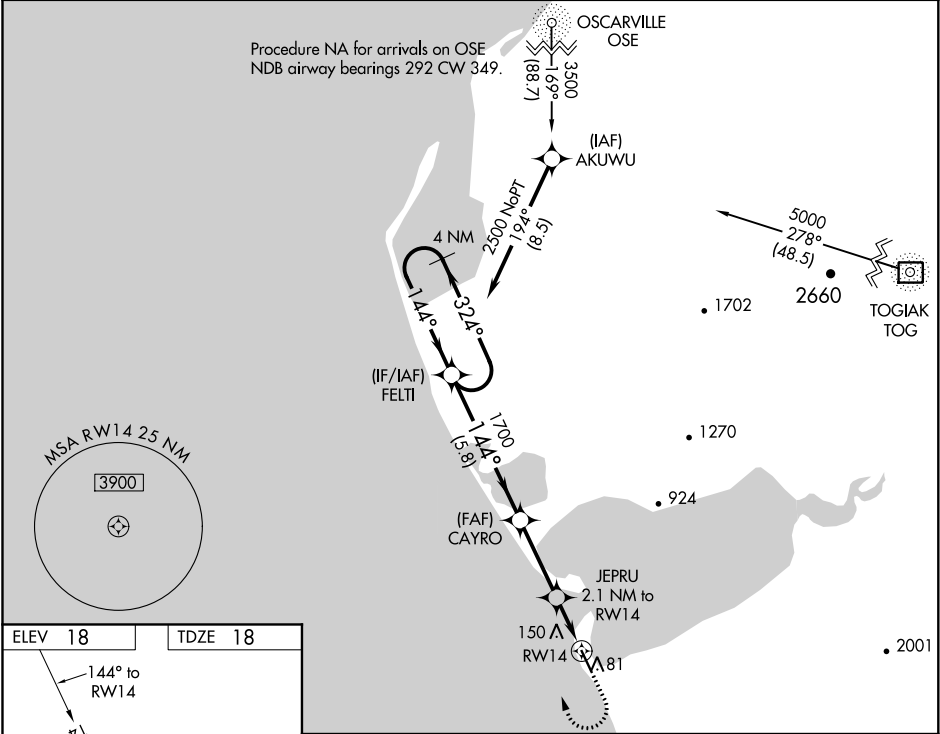
PLATINUM (PTU)(PAPM)

⚠

For uncompensated Baro-VNAV systems, LNAV/VNAV NA below -20°C (-4°F) or above 54°C (130°F). Baro-VNAV and VDP NA when using Togiak altimeter setting. DME/DME RNP-0.3 NA. When local altimeter setting not received, use Togiak altimeter setting: increase LPV DA to 371 feet; increase LNAV/VNAV DA to 424 feet and all Cats visibilities ¾ SM; increase all MDA 120 feet and increase LNAV and Circling Cat C visibility ¼ SM.

MISSED APPROACH: Climb to 420 then Climbing right turn to 2500 direct FELTI and hold.

AWOS-3P <b>118.375</b>	ANCHORAGE CENTER <b>124.2 251.1</b>	UNICOM <b>122.8 (CTAF) 0</b>
---------------------------	--	---------------------------------



4 NM Holding Pattern FELTI				420	2500	FELTI
2500 ← 324°				↑		
144° →				↷		
GP 3.00° TCH 40				*1.1 NM to RW14		
1700				*LNAV only		
5.8 NM				RW14		
3.1 NM				1 NM		
1.1 NM				1.1 NM		
CATEGORY	A	B	C	D		
LPV DA	268-1 250 (300-1)			NA		
LNAV/VNAV DA	321-1 303 (400-1)			NA		
LNAV MDA	400-1 382 (400-1)			400-1 ¾ 382 (400-1 ¾)	NA	
CIRCLING	460-1 442 (500-1)	480-1 462 (500-1)	520-1 ½ 502 (600-1 ½)	NA		

AK, 31 DEC 2020 to 25 FEB 2021

AK, 31 DEC 2020 to 25 FEB 2021