

WAAS CH 40425 W10A	APP CRS 097°	Rwy Idg TDZE 233 Apt Elev 249
--	------------------------	---

RNAV (GPS) RWY 10

WARREN "BUD" WOODS PALMER MUNI (PAQ) (PAAQ)

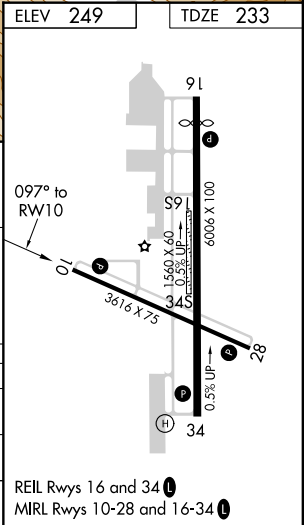
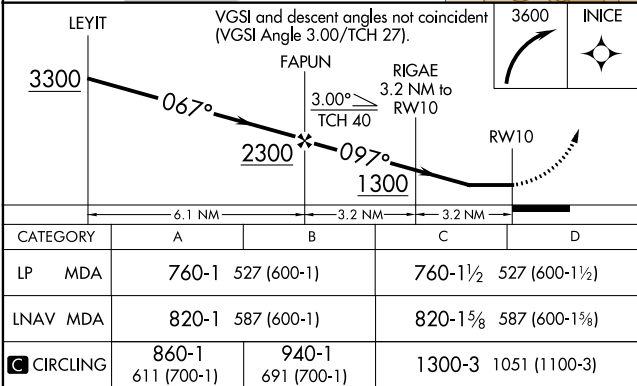
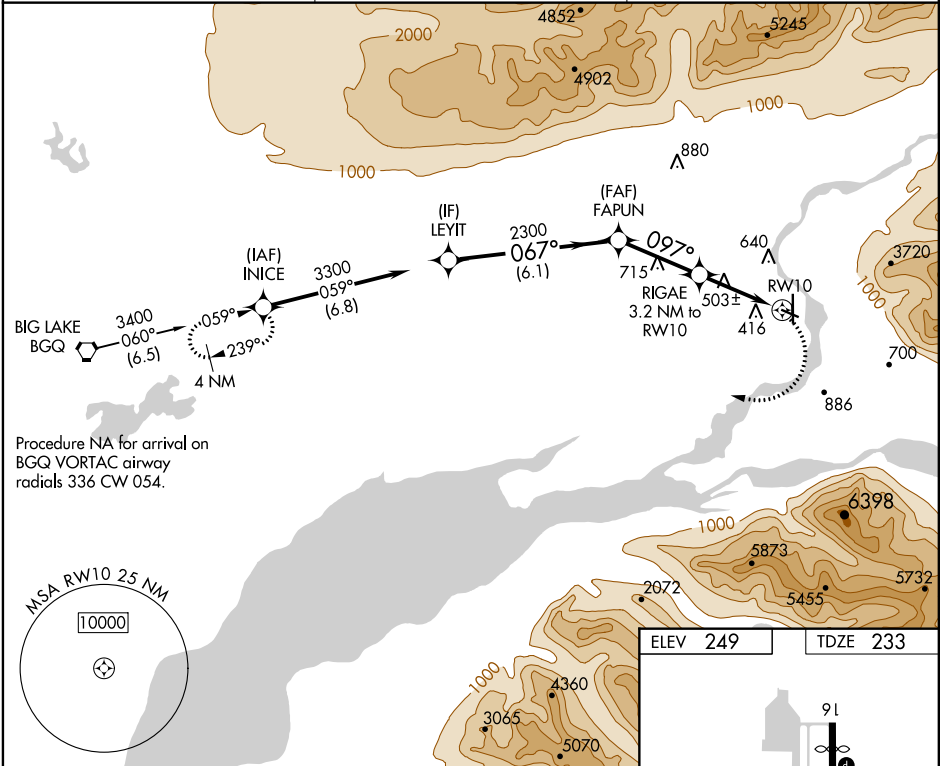
RNP APCH.

⚠

Circling NA northeast of Rwy 16-28. Procedure NA at night.
Rwy 10 helicopter visibility reduction below 1 SM NA.

MISSED APPROACH: (Do not exceed 185K until INICE)
Climbing right turn to 3600 direct INICE and hold.

ASOS 134.75	ANCHORAGE APP CON 118.6 290.5	PALMER RADIO 123.6 (CTAF) 0 122.4
-----------------------	---	--



RNAV (GPS) RWY 10

AK, 31 DEC 2020 to 25 FEB 2021

AK, 31 DEC 2020 to 25 FEB 2021