

APP CRS  
282°

Rwy Idg  
TDZE  
Apt Elev  
55

N/A  
N/A  
55

RNAV (GPS)-A  
ATKA (AKA)(PAAK)

RNP APCH.

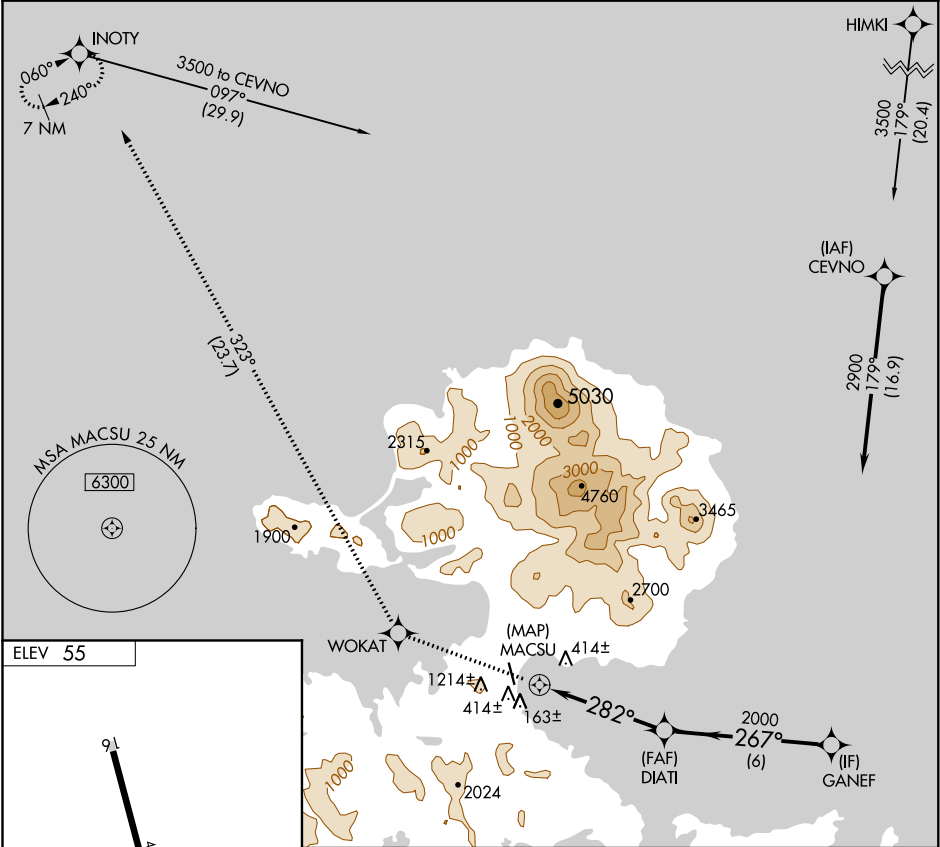
▼

▲

Circling NA west of Rwy 16/34. Procedure NA at night.  
When local altimeter setting not received, procedure NA.

MISSED APPROACH: Climb to 7500 direct WOKAT and on track 323° to INOTY and hold. Continue climb-in-hold to 7500.

AWOS-3P 135.55	ANCHORAGE CENTER 126.4 254.3	GCO 122.15	CTAF 122.9
-------------------	---------------------------------	---------------	---------------



ELEV 55

91  
4500 X 100  
0.5° UP  
34

REIL Rws 16 and 34  
MIRL Rwy 16-34

7500 WOKAT tr 323° INOTY

DIATI 2000 267° 2900

MACSU 282° 4.8 NM 6 NM

CATEGORY	A	B	C	D
CIRCLING	1280-1¼ 1225 (1300-1¼)	1280-1½ 1225 (1300-1½)	1280-3 1225 (1300-3)	NA

AK, 31 DEC 2020 to 25 FEB 2021

AK, 31 DEC 2020 to 25 FEB 2021