

WAAS CH 42608 W03A	APP CRS 032°	Rwy Idg 4000 TDZE 220 Apt Elev 220
--	------------------------	---

RNAV (GPS) RWY 3
HUSIA(HLA)(PAHL)

T For uncompensated Baro-VNAV systems, LNAV/VNAV NA below -25°C (-13°F) or above 48°C (118°F). Helicopter visibility reduction below $\frac{3}{4}$ SM NA. DME/DME RNP-0.3 NA.

MISSED APPROACH: Climb to 3500 direct SECOB and via 098° track to TOYKU and hold, continue climb-in-hold to 3500.

AWOS-3P 135.75	ANCHORAGE CENTER 127.0 290.2	FAIRBANKS RADIO 122.4	UNICOM 122.8 (CTAF) 0
--------------------------	--	---------------------------------	---------------------------------

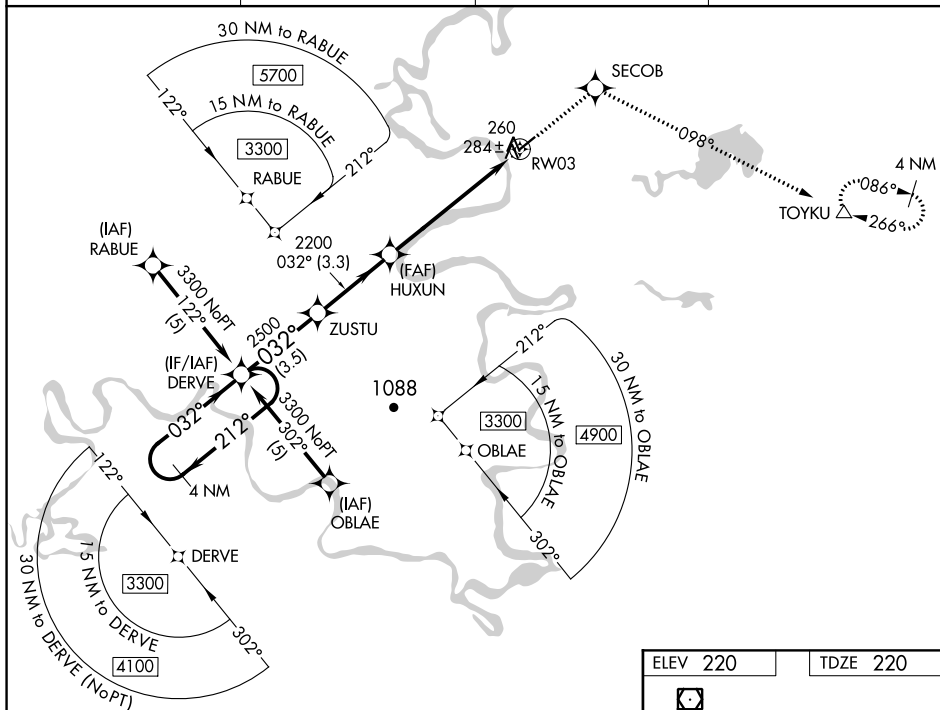


Diagram illustrating the VGS1 and RNAV glidepath not coincident (VGS1 Angle 3.00/TCH 25). The diagram shows a 4 NM Holding Pattern at 3300 feet. The glidepath starts at DERVE, passes through ZUSTU, and ends at HUXUN. The glidepath angle is 3.00 degrees, and the TCH is 45 feet. The distance from DERVE to ZUSTU is 3.5 NM, and from ZUSTU to HUXUN is 3.3 NM. The distance from HUXUN to the RW03 is 6 NM. The diagram also shows the VGS1 and RNAV glidepaths, the VGS1 Angle 3.00/TCH 25, and the TOYU (TOYU) symbol.