


WAAS CH 50542 W06A	APP CRS 055°	Rwy Idg 4494 TDZE 45 Apt Elev 45
--	------------------------	---

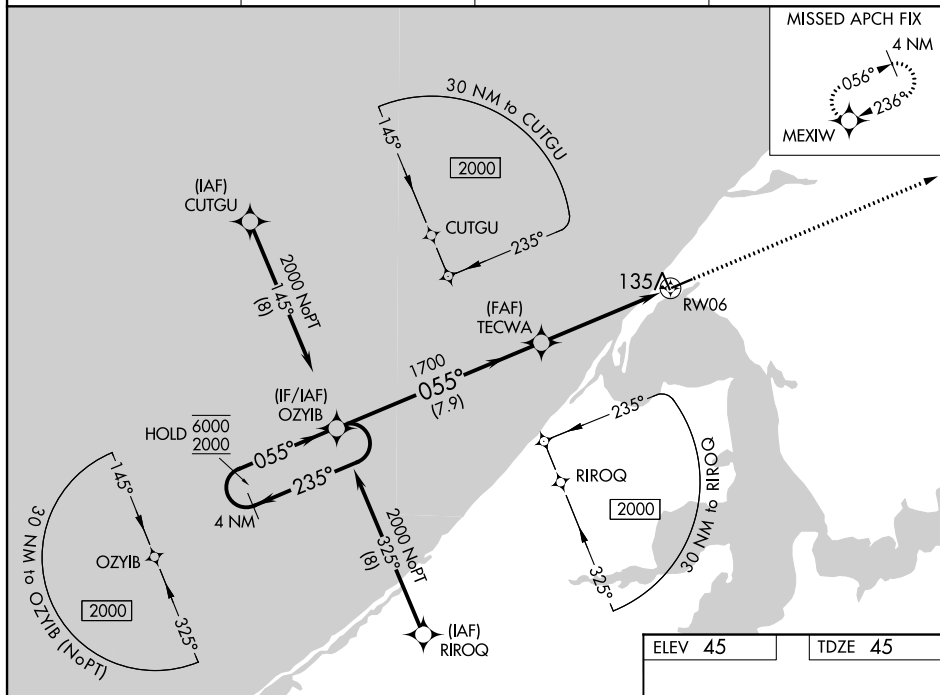
RNAV (GPS) RWY 6
WAINWRIGHT (AWI) (PAWI)

RNP APCH.

 For uncompensated Baro-VNAV systems, LNAV/VNAV NA below -22°C or above 54°C.

MISSED APPROACH: Climb to 2000 direct MEXIW and hold

ASOS-3 132.25	ANCHORAGE CENTER 135.3 239.25	BARROW RADIO 122.5	CTAF 122.8 0
-------------------------	---	------------------------------	------------------------



4 NM Holding Pattern

6000 ← 235°

2000 → 055°

OZYB

TECWA

1700

055°

1700

*1 NM to RW06

RW06

*LNAV only

MEXIWX

VGSI and RNAV glidepath not coincident (VGSI Angle 3.00/TCH 31).

GP 3.00° TCH 45

7.9 NM

4.1 NM

1 NM

CATEGORY	A	B	C	D
LPV DA		295-1	250 (300-1)	
LNAV/VNAV DA		316-1	271 (300-1)	
LNAV MDA		400-1	355 (400-1)	
C CIRCLING	460-1 415 (500-1)	500-1 455 (500-1)	500-1½ 455 (500-1½)	600-2 555 (600-2)

