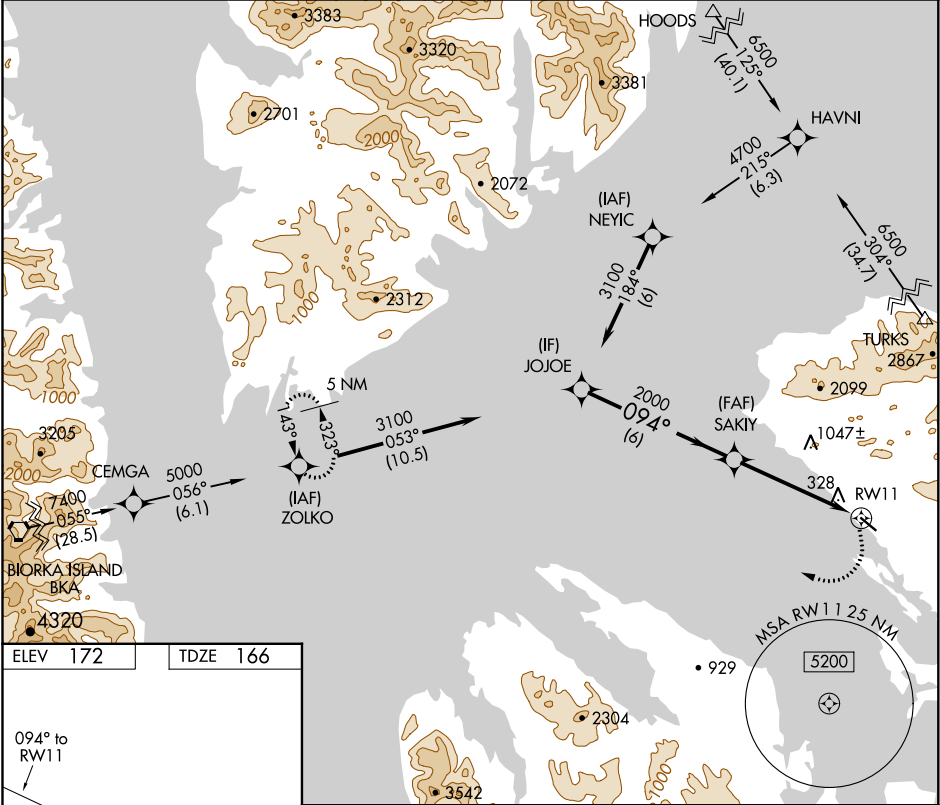


APP CRS	Rwy Idg	4000
094°	TDZE	166
	Apt Elev	172

RNAV (GPS) RWY 11
KAKE (AFE)(PAFE)

RNP APCH.	MISSED APPROACH: Climbing right turn to 5000 direct ZOLKO and hold.
Circling NA north of Rwy 11-29. When local altimeter setting not received, use Petersburg James A Johnson altimeter setting and increase all MDAs 100 feet. Circling Rwy 29 NA at night. Rwy 11 helicopter visibility reduction below ¾ SM NA.	

AWOS-3P 135.25	ANCHORAGE CENTER 118.0 132.175	SITKA RADIO 121.3 122.65	CTAF 122.9 0
-------------------	-----------------------------------	-----------------------------	-----------------



ELEV 172

TDZE 166

094° to RW11

REIL Rwy 11 0

MIRL Rwy 11-29 0

VGSI and descent angles not coincident.
(VGSI Angle 3.00/TCH 41).

CATEGORY	A	B	C	D
LNNAV MDA	1120-1¼ 954 (1000-1¼)	1120-1½ 954 (1000-1½)	1120-3 954 (1000-3)	NA
CIRCLING	1120-1¼ 948 (1000-1¼)	1120-1½ 948 (1000-1½)	1120-3 948 (1000-3)	NA

AK, 31 DEC 2020 to 25 FEB 2021

AK, 31 DEC 2020 to 25 FEB 2021