

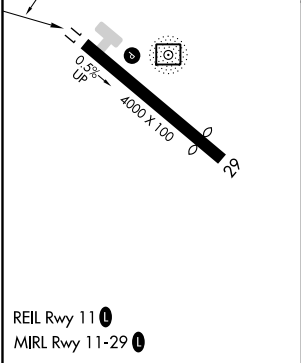
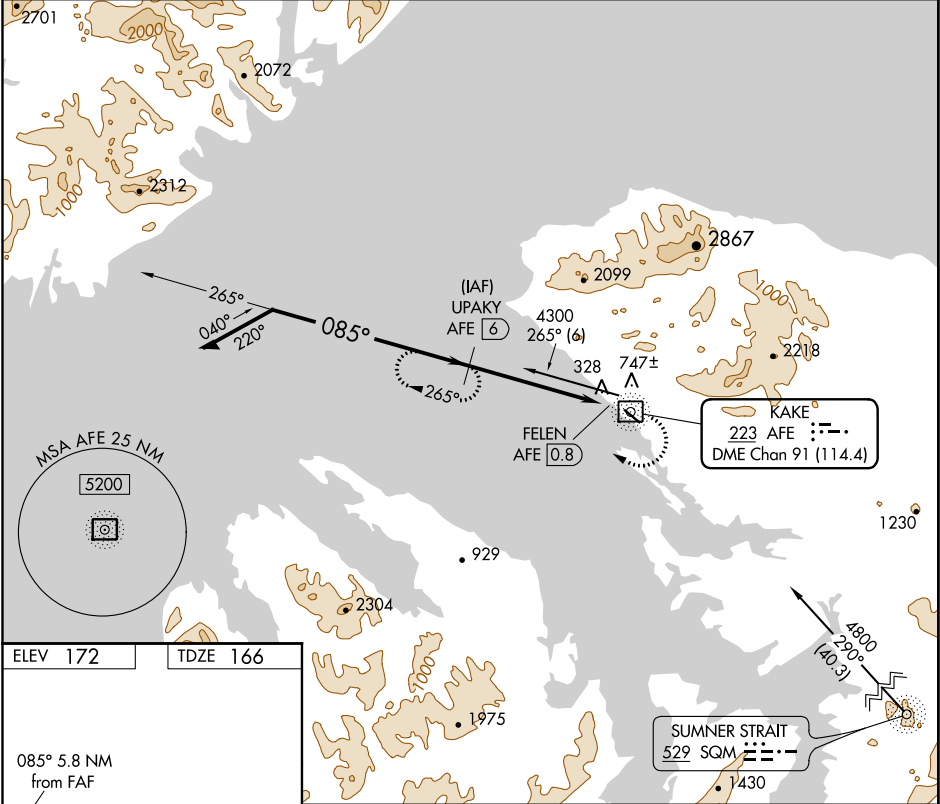
NDB/DME AFE	APP CRS	Rwy Idg	4000
223	085°	TDZE	166
Chan 91 (114.4)		Apt Elev	172

NDB/DME RWY 11  
KAKE (AFE)(PAFE)

**⚠** Circling NA north of Rwy 11-29. When local altimeter setting not received use Petersburg James A Johnson altimeter setting and increase all MDAs 100 feet, and increase Cats B and C visibility ¼ mile. Circling Rwy 29 NA at night. Rwy 11 helicopter visibility reduction below ¾ SM NA.

**MISSED APPROACH:** Climb to 1200 then climbing right turn to 4300 via heading 325° and 265° bearing from AFE NDB/DME to UPAKY/6 DME and hold.

AWOS-3P	ANCHORAGE CENTER	SITKA RADIO	CTAF
135.25	118.0 132.175	121.3 122.65	122.9 0



Remain within 10 NM	UPAKY AFE 6	1200	4300	AFE 265°	UPAKY AFE 6
4300	265°	hdg 325°			
085°	2400			AFE NDB	
VGSI and descent angles not coincident (VGSI Angle 3.00/TCH 41).	3.59°	FELEN AFE 0.8			
	TCH 41	5.2 NM	0.6		
CATEGORY	A	B	C	D	
S-11	1100-1¼ 934 (1000-1¼)		1100-2¾ 934 (1000-2¾)	NA	
CIRCLING	1100-1¼ 928 (1000-1¼)		1100-2¾ 928 (1000-2¾)	NA	