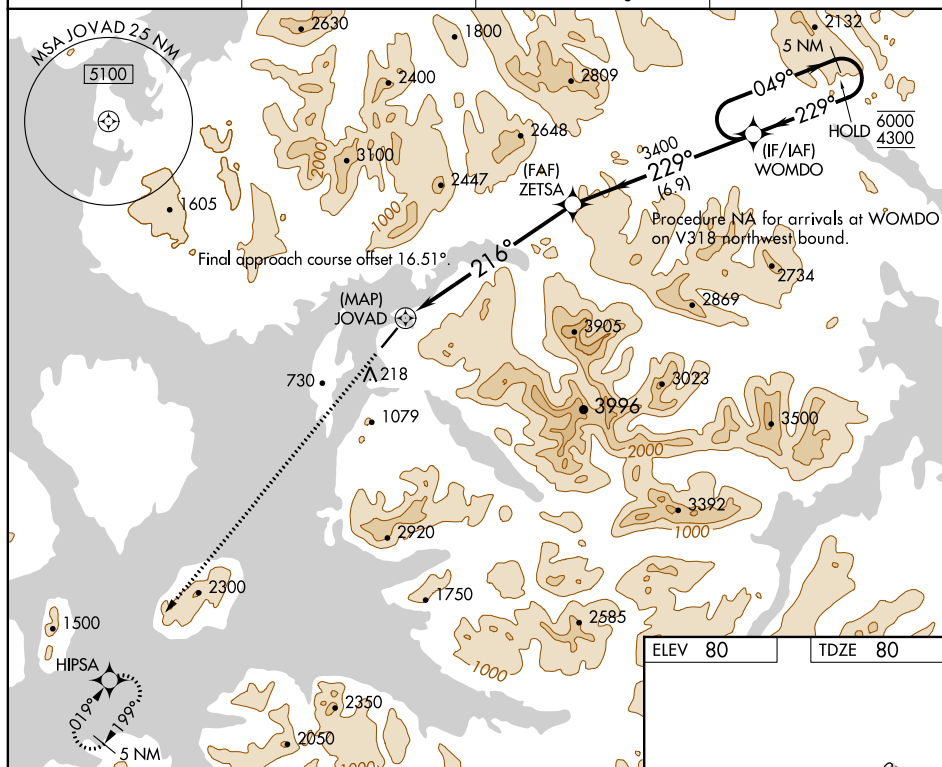


RNAV (GPS) RWY 20

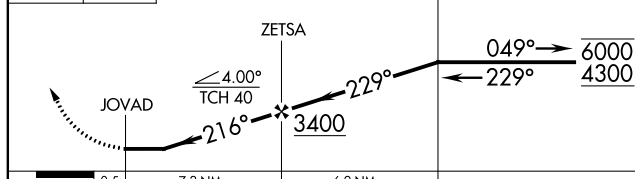
Rwy 20 helicopter visibility reduction below 1 SM NA.
Circling NA east of Rwy 2-20. Procedure NA at night.

MISSED APPROACH: Climbing left turn to 4900 direct HIPSA and hold.

CTAF
120.9

4900	HIPSA
	

5 NM
Holding Pattern



CATEGORY	7.2 NM	6.9 NM	C	D
LNAB MDA	2440-1¼ 2360 (2400-1¼)	2440-1½ 2360 (2400-1½)		NA
CIRCLING	2440-1¼ 2360 (2400-1¼)	2440-1½ 2360 (2400-1½)		NA

