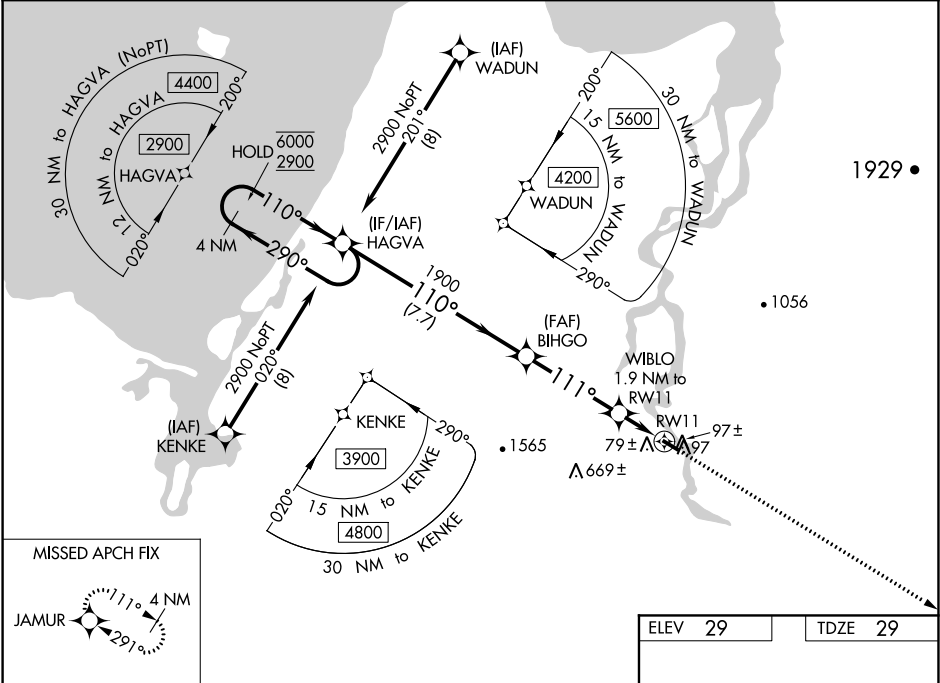


WAAS CH <b>58041</b> <b>W11A</b>	APP CRS <b>111°</b>	Rwy Idg <b>3200</b> TDZE <b>29</b> Apt Elev <b>29</b>
--	------------------------	---

**RNAV (GPS) RWY 11**  
BUCKLAND (BVK)(PABL)

RNP APCH.	Baro-VNAV and VDP NA when using Selawik altimeter setting. For uncompensated Baro-VNAV systems, LNAV/VNAV NA below -21°C or above 54°C. When local altimeter setting is not received use Selawik altimeter setting: increase DA to 387 feet and all visibilities $\frac{3}{8}$ SM; increase all MDAs 120 feet and visibility Cat C $\frac{1}{4}$ SM.	MISSED APPROACH: Climb to 3100 direct JAMUR and hold, continue climb-in-hold to 3100.
-----------	---	--

AWOS-3P <b>135.15</b>	ANCHORAGE CENTER <b>119.2 263.0</b>	KOTZEBUE RADIO <b>122.3</b>	CTAF <b>122.9 0</b>
--------------------------	--	--------------------------------	------------------------



4 NM Holding Pattern		VGSI and RNAV glidepath not coincident (VGSI Angle 3.00/TCH 25).		3100 JAMUR
6000 ← 290°		1900		*LNAV only.
2900 → 110°		110°		*0.9 NM to RW11
GP 3.00°		1900		*660
TCH 30		7.7 NM		1 NM
		3.9 NM		0.9
CATEGORY	A	B	C	D
LPV DA	279-1	250 (300-1)		NA
LNAV/VNAV DA	279-1	250 (300-1)		NA
LNAV MDA	340-1	311 (400-1)		NA
CIRCLING	540-1	511 (600-1)	640-1 3/4 611 (700-1 3/4)	NA

