

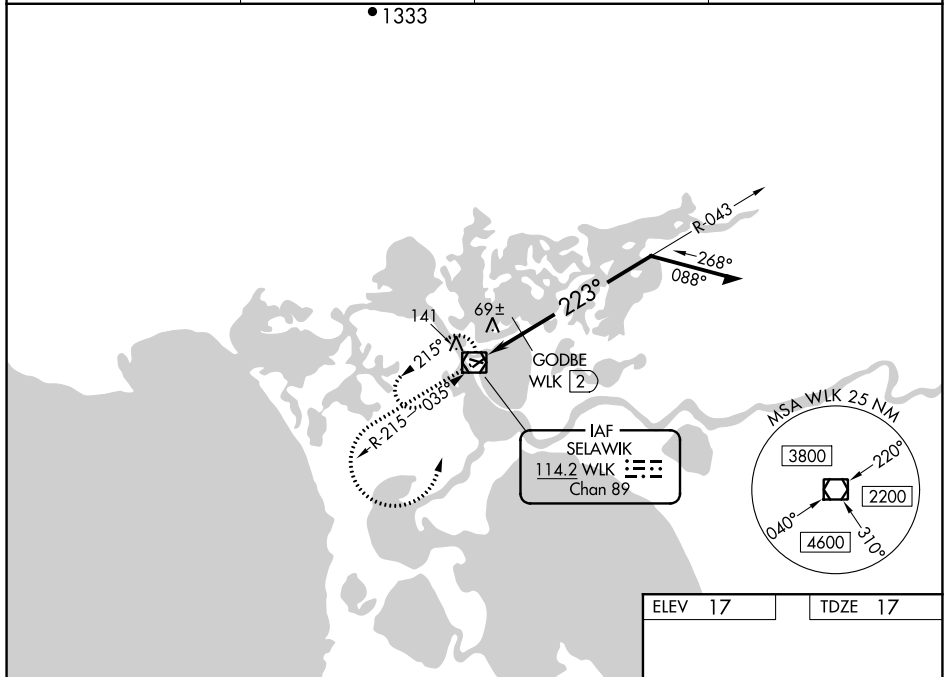
VOR RWY 22  
SELAWIK (WLK) (PASK)

 -36°C

Circling Rwy 9, 27 NA at night.

**MISSED APPROACH:** Climb to 1000 then climbing left turn to 2500 direct WLK VOR/DME and hold, continue climb-in-hold to 2500.

AWOS-3P <b>135.65</b>	ANCHORAGE CENTER <b>119.2 263.0</b>	KOTZEBUE RADIO <b>122.5</b>	CTAF <b>122.7 0</b>
--------------------------	--	--------------------------------	------------------------



1000 2500 WLK

↑ ↪ □

WLK VOR/DME

2500

043°

1600

GODBE WLK 2

223°

400

1.6 NM

Remain within 10 NM

CATEGORY	A	B	C	D
S-22	400-1	383 (400-1)	400-1¼	383 (400-1¼)
CIRCLING	480-1	463 (500-1)	480-1½ 463 (500-1½)	580-2 563 (600-2)
GODBE FIX MINIMUMS				
S-22	340-1 323 (400-1)			
CIRCLING	480-1	463 (500-1)	480-1½ 463 (500-1½)	580-2 563 (600-2)

