
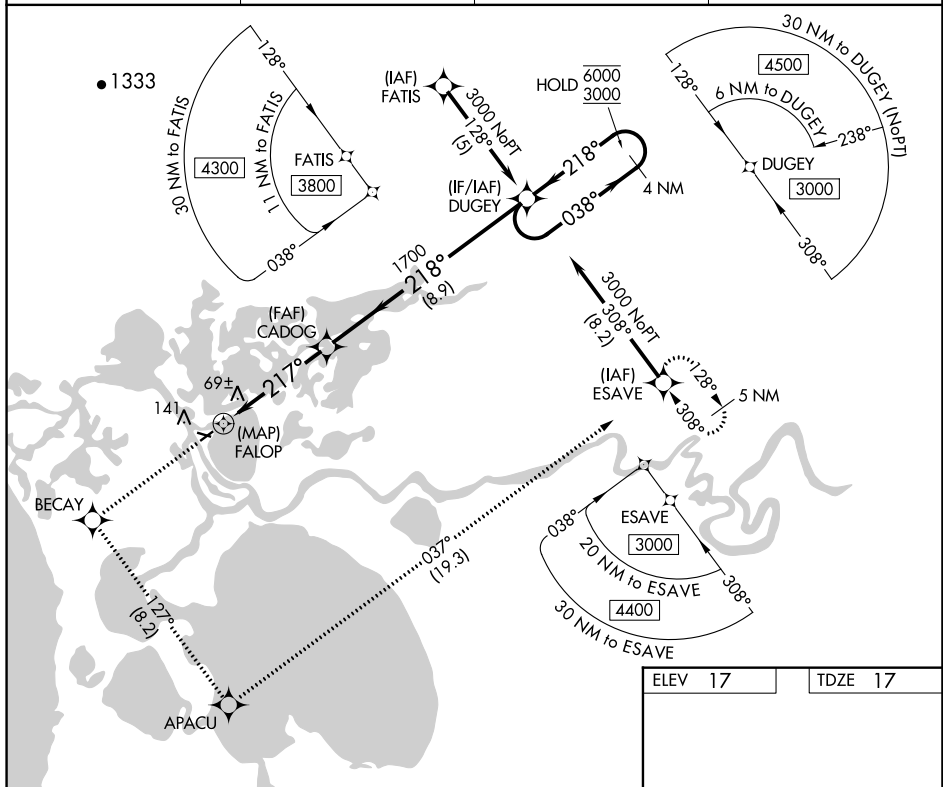


APP CRS	Rwy Idg	3002
217°	TDZE	17
	Apt Elev	17

RNAV (GPS) Y RWY 22
SELAWIK (WLK) (PASK)

RNP APCH.		MISSED APPROACH: Climb to 3000 direct BECAY and left turn on track 127° to APACU and left turn on track 037° to ESAVE and hold.	
 -36°C Circling Rwy 9, 27 NA at night.			
AWOS-3P 135.65	ANCHORAGE CENTER 119.2 263.0	KOTZEBUE RADIO 122.5	CTAF 122.7 0



3000	BEACAY	APACU	ESAVE
↑	✦	✦	✦
	tr 127°	tr 037°	

DUGEY 4 NM Holding Pattern

CADOG

FALOP

038° → 6000
← 218° 3000

218°

0.5 4.6 NM 8.9 NM

CATEGORY	A	B	C	D
----------	---	---	---	---

LNAV	MDA	320-1	303 (400-1)
------	-----	-------	-------------

CIRCLING	480-1 463 (500-1)	480-1½ 463 (500-1½)	580-2 563 (600-2)
----------	-------------------	---------------------	-------------------

MIRL Rwy 9-27 and 4-22