

LOC I-PBV	APP CRS	Rwy Idg	4982
110.1	111°	TDZE	128
		Apt Elev	128

ILS or LOC RWY 11

ST GEORGE (PBV) (PAPB)

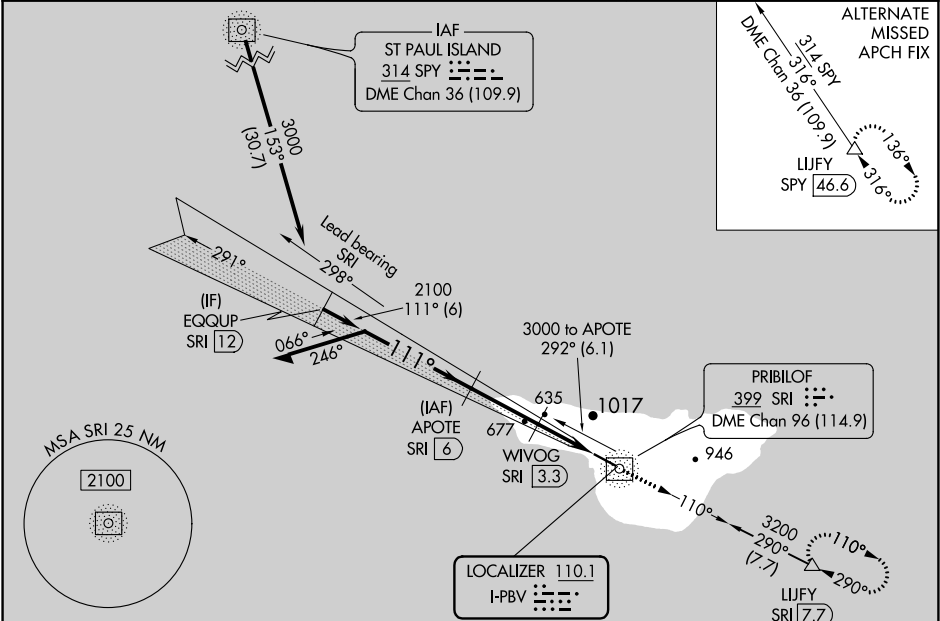
⚠

DME from SRI NDB/DME. Simultaneous reception of I-PBV and SRI DME required. Circling NA north of Rwy 11-29. ADF and DME required. Inop table does not apply to S-LOC 11 Cats A and B and S-ILS 11 all Cats.

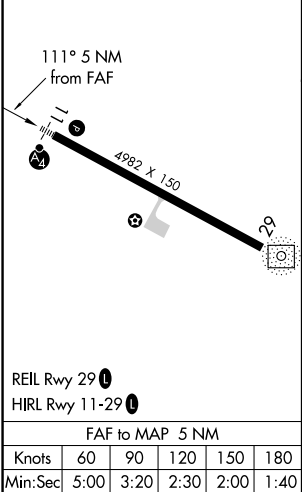
MALSF

MISSED APPROACH: Climb to 3200 on SRI NDB/DME bearing 110° to LIJFY/SRI 7.7 DME and hold, continue climb-in-hold to 3200.

ASOS 135.45	ANCHORAGE CENTER 119.1 339.8	CTAF 122.8
----------------	---------------------------------	---------------



ELEV 128	TDZE 128
----------	----------



ADF and DME REQUIRED				
<div>Remain within 10 NM</div> <div>APOTE SRI 6</div> <div>WVOG SRI 3.3</div> <div>3000 291° 2100 111°</div> <div>GS 3.60° TCH 56</div> <div>2100</div> <div>2.7 NM 0.6 NM 1.7 NM</div> <div>3200 SRI 110° LIJFY SRI 7.7</div> <div>*LOC only</div> <div>*SRI 2.7</div> <div>SRI 1</div> <div>SRI NDB/DME</div>				
CATEGORY	A	B	C	D
S-ILS 11	428-1 300 (300-1)			NA
S-LOC 11	840-1	712 (800-1)	840-1¾ 712 (800-1¾)	NA
CIRCLING	840-1 712 (800-1)	980-1¼ 852 (900-1¼)	980-2½ 852 (900-2½)	NA