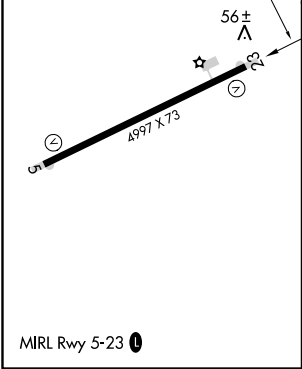
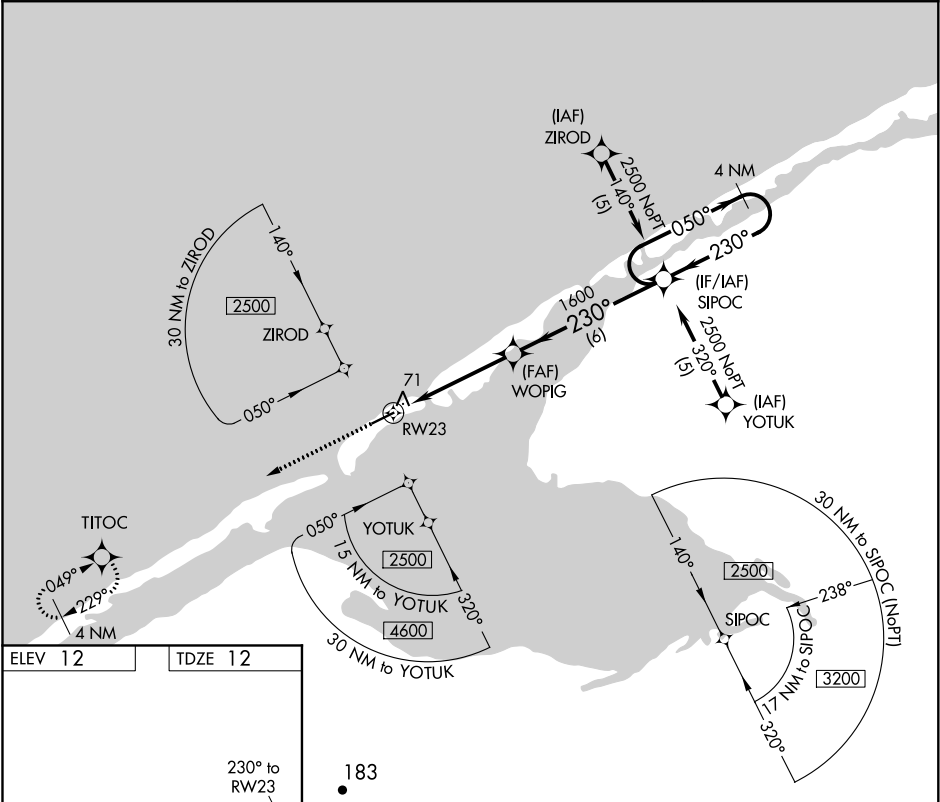


APP CRS 230°	Rwy Idg 4997 TDZE 12 Apt Elev 12
------------------------	---

RNAV (GPS) RWY 23
SHISHMAREF (SHH) (PASH)

DME/DME RNP-0.3 NA.		MISSED APPROACH: Climb to 2500 direct TITOC and hold.	
AWOS-3P 121.1	ANCHORAGE CENTER 119.2 263.0	NOME RADIO 122.4	CTAF 123.0



183			
2500 TITOC			
VGSI and descent angles not coincident (VGSI Angle 3.00/TCH 25).			
1.1 NM to RWY 23			
3.04° TCH 45			
1.1 3.7 NM 6 NM			
CATEGORY	A	B	C
LNAV MDA	380-1 368 (400-1)		
CIRCLING	420-1 408 (500-1)	480-1 468 (500-1)	480-1½ 468 (500-1½)

AK, 31 DEC 2020 to 25 FEB 2021

AK, 31 DEC 2020 to 25 FEB 2021