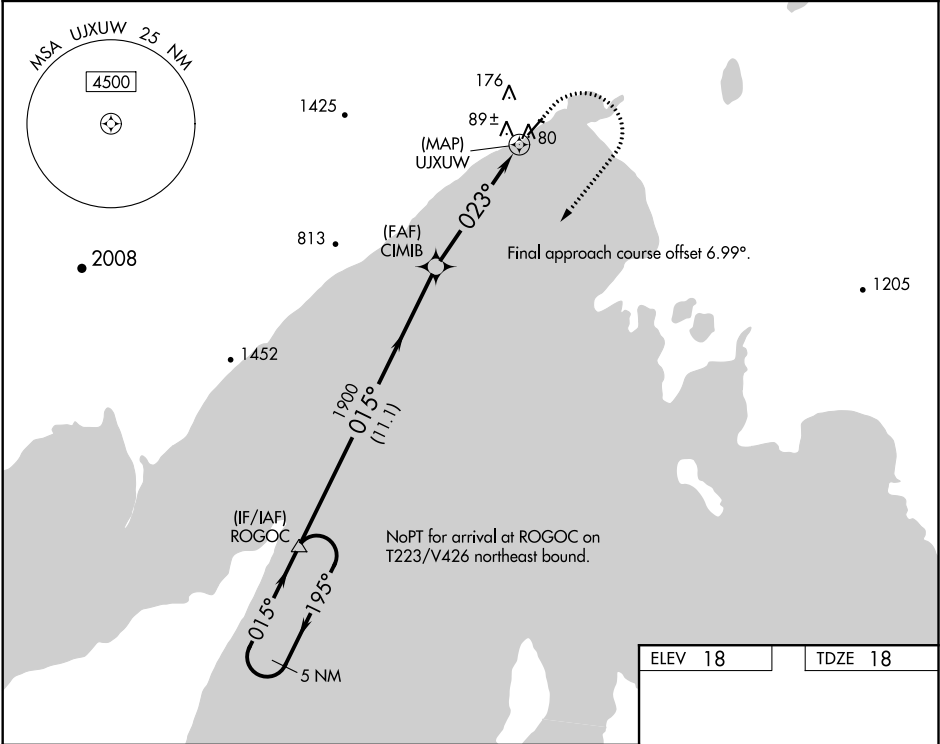


WAAS CH <b>69441</b> <b>W03A</b>	APP CRS <b>023°</b>	Rwy Idg <b>4400</b> TDZE <b>18</b> Apt Elev <b>18</b>
--	------------------------	---

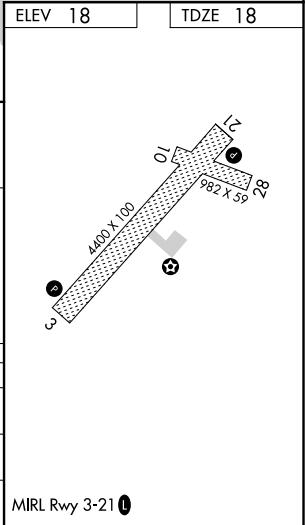
RNAV (GPS) RWY 3  
TOGIAK (TOG)(PATG)

<p><b>⚠</b> Circling NA northwest of Rwy 3-21. <b>⚠</b> Rwy 3 helicopter visibility reduction below 1 SM NA. DME/DME RNP-0.3 NA. Procedure NA at night.</p>	<p>MISSED APPROACH: Climb to 420 then climbing right turn to 4400 direct ROGOC and hold, continue climb-in-hold to 4400.</p>
---	--

AWOS-3P <b>119.3</b>	ANCHORAGE CENTER <b>132.75 282.35</b>	CTAF <b>122.5</b>
-------------------------	--	----------------------



5 NM Holding Pattern		VGSI and descent angles not coincident (VGSI Angle 3.00/TCH 25).		420	4400	ROGOC
ROGOC		CIMB		UJXUW		
4400		1900		1900		
195°		015°		023°		
015°		015°		023°		
11.1 NM		5.3 NM		0.5 NM		
CATEGORY	A	B	C	D		
LP MDA	380-1		362 (400-1)			
LNVA MDA	400-1 382 (400-1)		400-1 1/8 382 (400-1 1/8)			
CIRCLING	400-1 382 (400-1)		480-1 462 (500-1)		480-1 1/2 462 (500-1 1/2) 800-2 1/2 782 (800-2 1/2)	



AK, 31 DEC 2020 to 25 FEB 2021

AK, 31 DEC 2020 to 25 FEB 2021