

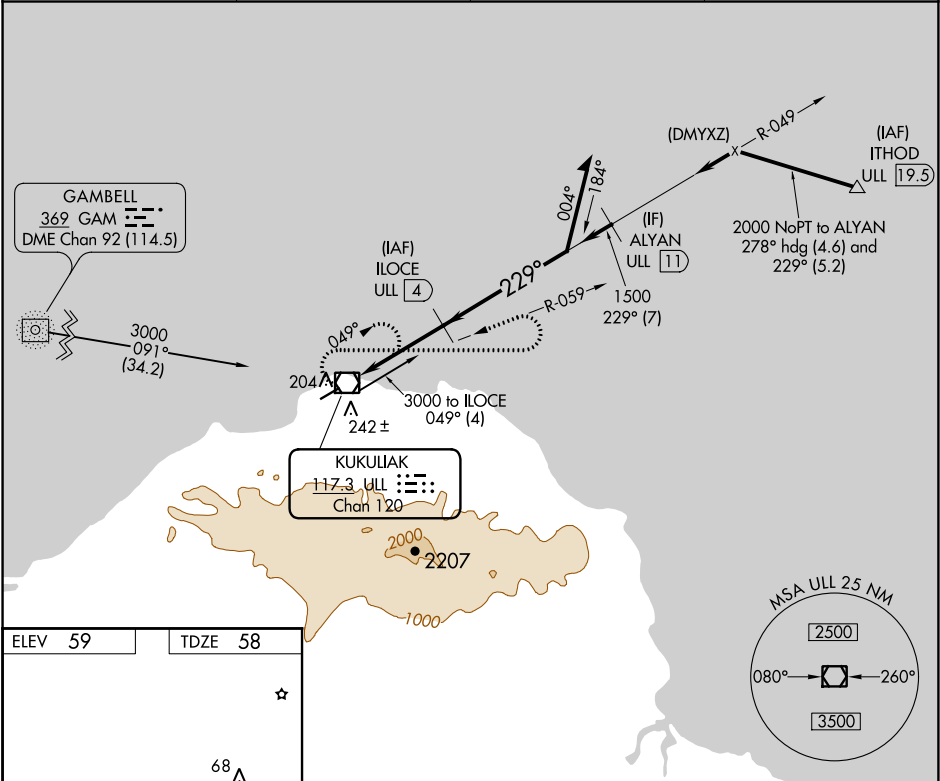
VOR/DME ULL 117.3 Chan 120	APP CRS 229°	Rwy Idg TDZE 58 Apt Elev 59
--	------------------------	---

VOR/DME RWY 23
SAVOONGA (SVA) (PASA)

⚠ Circling NA southeast of Rwy 5-23. When local altimeter setting not received, use Gambell altimeter setting and increase all MDA 100 feet, and increase S-23 Cat C-D and Circling Cat C visibility ¼ mile. VDP NA with Gambell altimeter setting.

MISSED APPROACH: Climbing right turn to 3300 via heading 090° and via ULL VOR/DME R-059 then left turn via ULL VOR/DME R-059 to ULL VOR/DME and hold.

AWOS-3P 121.3	ANCHORAGE CENTER 132.2 281.4	NOME RADIO 122.3	CTAF 122.7 0
-------------------------	--	----------------------------	------------------------



ELEV **59** TDZE **58**

MIRL Rwy 5-23 **0**

68 **⚠**

3300	ULL R-059	ULL R-059	ULL	ILOCE VOR/DME ULL 4	VGSI and descent angles not coincident (VGSI Angle 3.00/TCH 24).
3000	090°	090°	090°	3000	049°
2000	229°	229°	229°	2000	229°
1500	229°	229°	229°	1500	229°
0.5	1.1	2.9	0.5	1.1	2.9
CATEGORY	A	B	C	D	
S-23	600-1	542 (600-1)	600-1½ 542 (600-1½)	600-1¾ 542 (600-1¾)	
CIRCLING	600-1	541 (600-1)	600-1½ 541 (600-1½)	620-2 561 (600-2)	

AK, 31 DEC 2020 to 25 FEB 2021

AK, 31 DEC 2020 to 25 FEB 2021