
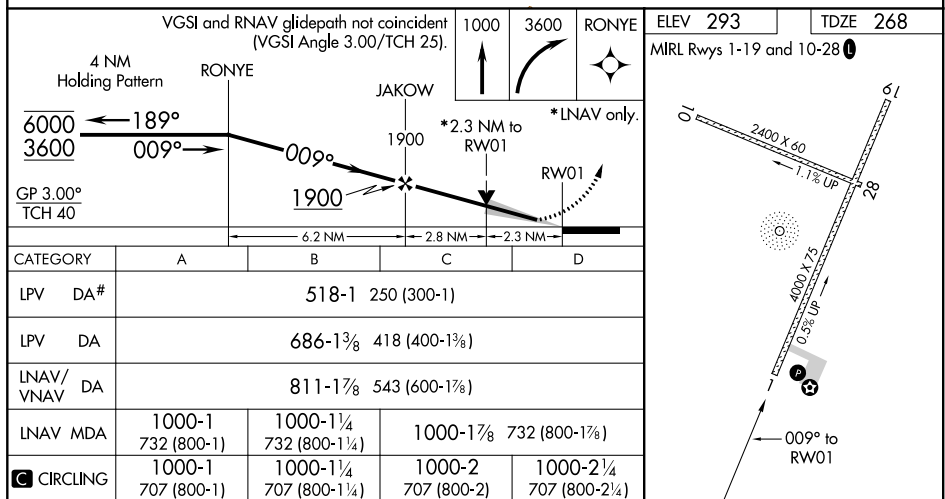
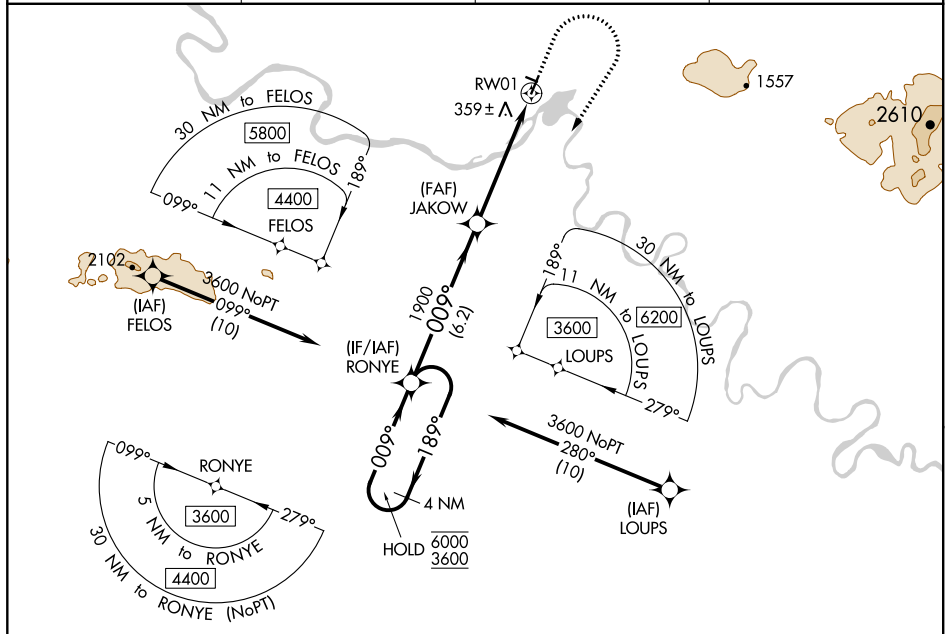


RNAV (GPS) RWY 1

 Circling NA west of Rwy 1-19. For uncompensated Baro-VNAV systems, LNAV/VNAV NA below -20°C or above 42°C.

MISSED APPROACH: Climb to 1000 then climbing right turn to 3600 direct RONYE and hold, continue climb-in-hold to 3600.
Missed approach requires minimum climb of 210 feet per NM to 2300.

AWOS-3P 132.1	ANCHORAGE CENTER 119.2 263.0	KOTZEBUE RADIO 122.0	CTAF 122.7
-------------------------	--	--------------------------------	----------------------



AK, 31 DEC 2020 to 25 FEB 2021

AK, 31 DEC 2020 to 25 FEB 2021