

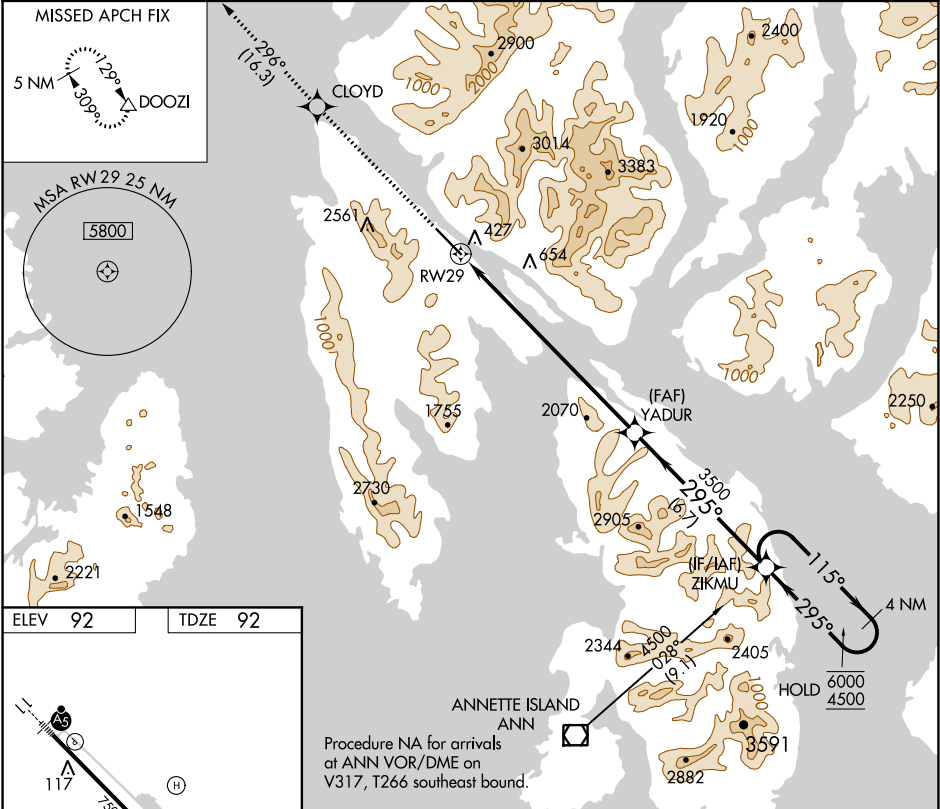
WAAS CH 40142 W29A	APP CRS 295°	Rwy Idg TDZE Apt Elev	7500 92 92
--	------------------------	-----------------------------	---------------------------------------

RNAV (GPS) RWY 29

KETCHIKAN INTL (KTN)(PAKT)

RNP APCH.	MALSR	MISSED APPROACH: Climb to 5000 direct CLOYD and on track 296° to DOOZI and hold. *Missed approach requires minimum climb of 425 feet per NM to 2160; If unable to meet climb gradient, see RNAV (GPS)-B.
NA For inop ALS, increase all Cats visibility to 1¾ SM.		

AFIS 134.45	ANCHORAGE CENTER 118.5 284.6	KETCHIKAN RADIO 123.6 (CTAF) 0
-----------------------	--	--



5000	CLOYD	tr 296°	DOOZI	VGSI and RNAV glidepath not coincident (VGSI Angle 3.00/TCH 49).
				ZIKMU
				4 NM Holding Pattern
				115° → 6000
				← 295° 4500
				GP 3.55°
				TCH 50
				8.9 NM
				6.7 NM
CATEGORY	A	B	C	D
LPV DA*	722-1¾	630 (700-1¾)		NA