


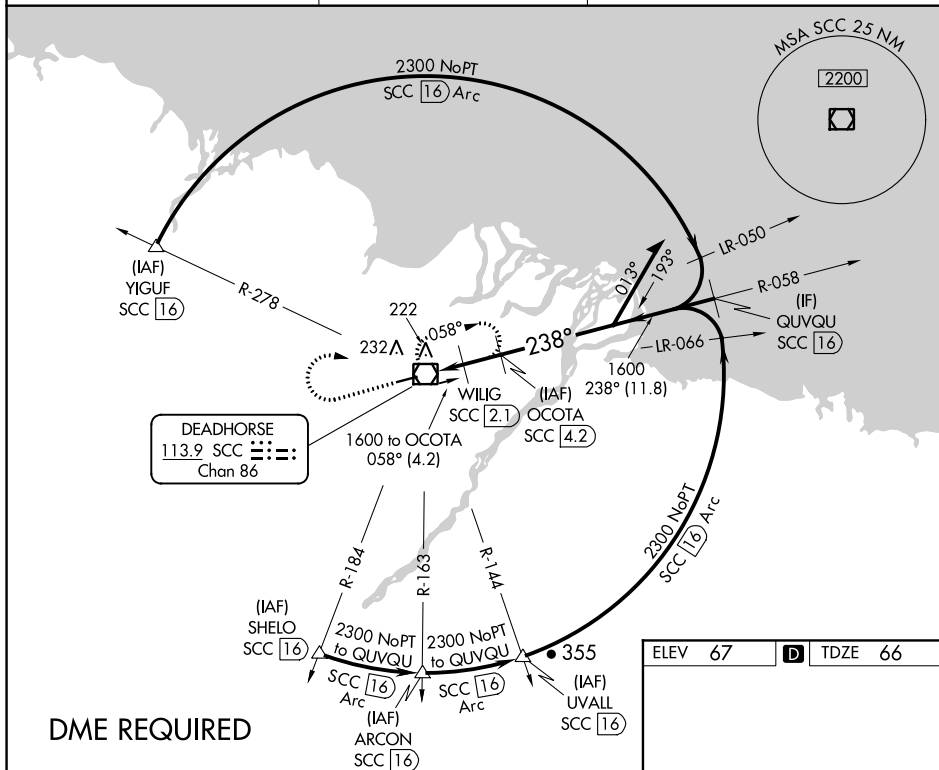


VOR/DME SCC 113.9 Chan 86	APP CRS 238°	Rwy Idg 6500 TDZE 66 Apt Elev 67
---	------------------------	---

VOR Z RWY 24
DEADHORSE (SCC) (PASC)

 DME required.  -45°C For inop ALS, increase Cats C/D/E visibility to RVR 6000.	MALSR 	MISSED APPROACH: Climb to 1500 then climbing right turn to 2000 direct SCC VOR/DME and hold, continue climb-in-hold to 2000.
---	--	--

AFIS 118.4	ANCHORAGE CENTER 134.4 370.9	DEADHORSE RADIO 123.6 (CTAF) 0
----------------------	--	--



<p>WILIG SCC 2.1</p> <p>OCOTA SCC 4.2</p> <p>Remain within 15 NM</p> <p>058°</p> <p>238°</p> <p>1600</p> <p>940</p> <p>≤ 3.00° TCH 54</p> <p>0.5 0.6 1.5 NM 2.1 NM</p>					
CATEGORY	A		B		C
S-24	480/24 414 (500-½)		480/40 414 (500-¾)		
CIRCLING	540-1 473 (500-1)		580-1½ 513 (600-1½)		620-2 553 (600-2)

