

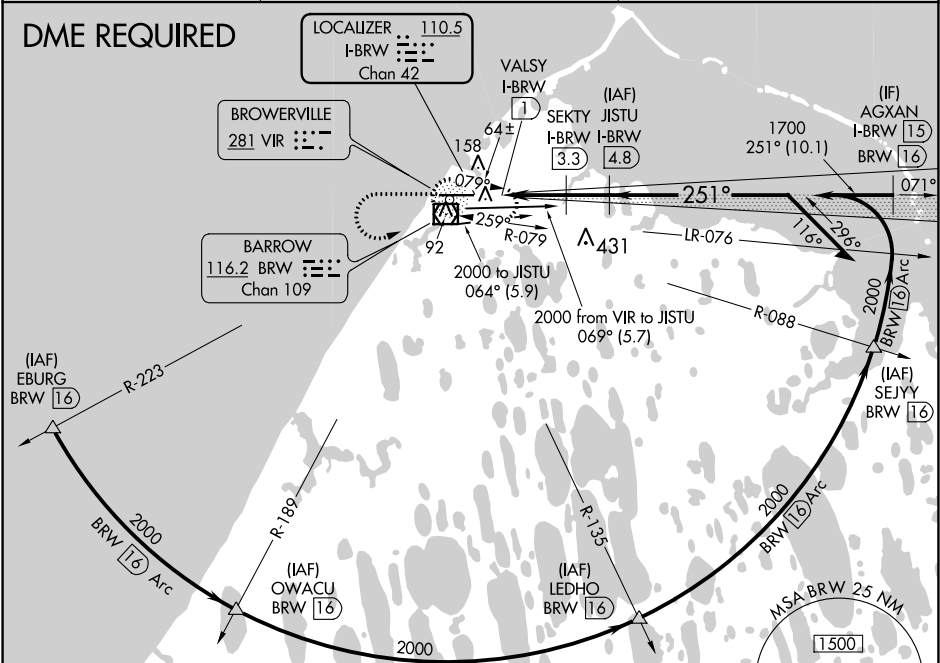
LOC/DME I-BRW	APP CRS	Rwy Idg	5900
110.5	251°	TDZE	46
Chan 42		Apt Elev	49

LOC BC RWY 25

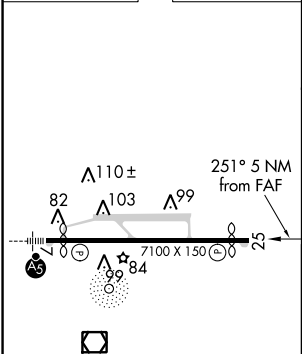
WILEY POST-WILL ROGERS MEMORIAL (BRW)(PABR)

<p><b>V</b> <b>A</b> Circling NA for Cat A north of Rwy 7-25. DME required.</p>	<p>MISSED APPROACH: Climb to 1600 then climbing left turn to 2000 direct BRW VOR/DME and hold, continue climb-in-hold 2000.</p>
---	---



AFIS 132.15	ANCHORAGE CENTER 135.3 239.25	BARROW RADIO 123.6 (CTAF) <b>1</b>
----------------	----------------------------------	---------------------------------------



ELEV 49	<b>D</b>	TDZE 46
---------	----------	---------



REIL Rwy 25 <b>1</b>
HIRL Rwy 7-25 <b>1</b>

<div>1600 ↑</div>		<div>2000 ↘</div>	<div>BRW </div>		Use I-BRW DME when on the localizer course.			
<div></div>								
CATEGORY		A		B		C	D	
S-25		320-1 <sup>3</sup> / <sub>8</sub> 274 (300-1 <sup>3</sup> / <sub>8</sub> )						
 CIRCLING		440-1 <sup>3</sup> / <sub>8</sub> 391 (400-1 <sup>3</sup> / <sub>8</sub> )	520-1 <sup>3</sup> / <sub>8</sub> 471 (500-1 <sup>3</sup> / <sub>8</sub> )	520-1 <sup>1</sup> / <sub>2</sub> 471 (500-1 <sup>1</sup> / <sub>2</sub> )	680-2 631 (700-2)			

LOC BC RWY 25

AK, 31 DEC 2020 to 25 FEB 2021

AK, 31 DEC 2020 to 25 FEB 2021