

AFIS
135.9
ANCHORAGE CENTER
126.1 335.5
SITKA RADIO
123.6 (CTAF) 122.2
UNICOM
122.95

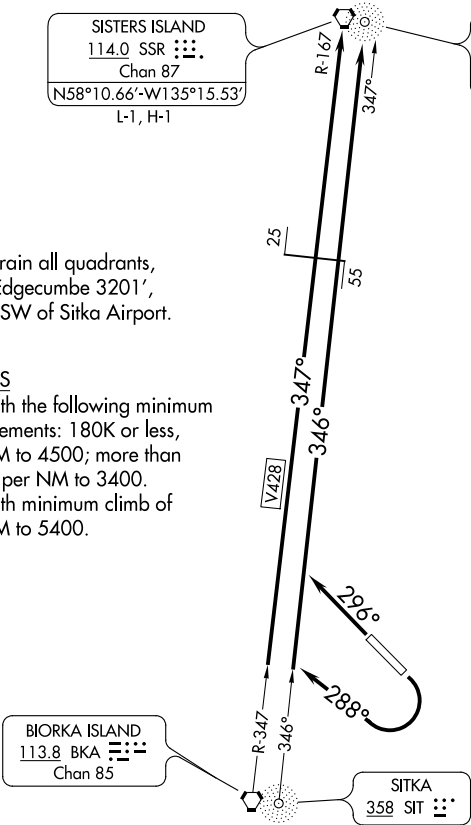
SISTERS ISLAND
114.0 SSR
Chan 87
N58°10.66'-W135°15.53'
L-1, H-1

ELEPHANT
391 EEF
N58°10.26'-W135°15.48'
L-1, H-1

WARNING: High terrain all quadrants,
Mount Edgecumbe 3201',
13 NM SW of Sitka Airport.

TAKEOFF MINIMUMS

Rwy 11: Standard with the following minimum
climb requirements: 180K or less,
390' per NM to 4500; more than
180K, 645' per NM to 3400.
Rwy 29: Standard with minimum climb of
357' per NM to 5400.



NOTE: Chart not to scale.



DEPARTURE ROUTE DESCRIPTION

TAKEOFF RUNWAY 11: Climbing right turn heading 288° to join V428 and SSR R-167
to SSR VORTAC or on SIT 346° bearing and EEF 347° course to EEF NDB.
TAKEOFF RUNWAY 29: Climb heading 296° to join V428 to SSR VORTAC or SIT
NDB 346° bearing and EEF 347° course to EEF NDB.