

APP CRS
192°

Rwy Idg **6400**
TDZE **81**
Apt Elev **82**

RNAV (GPS) RWY 19

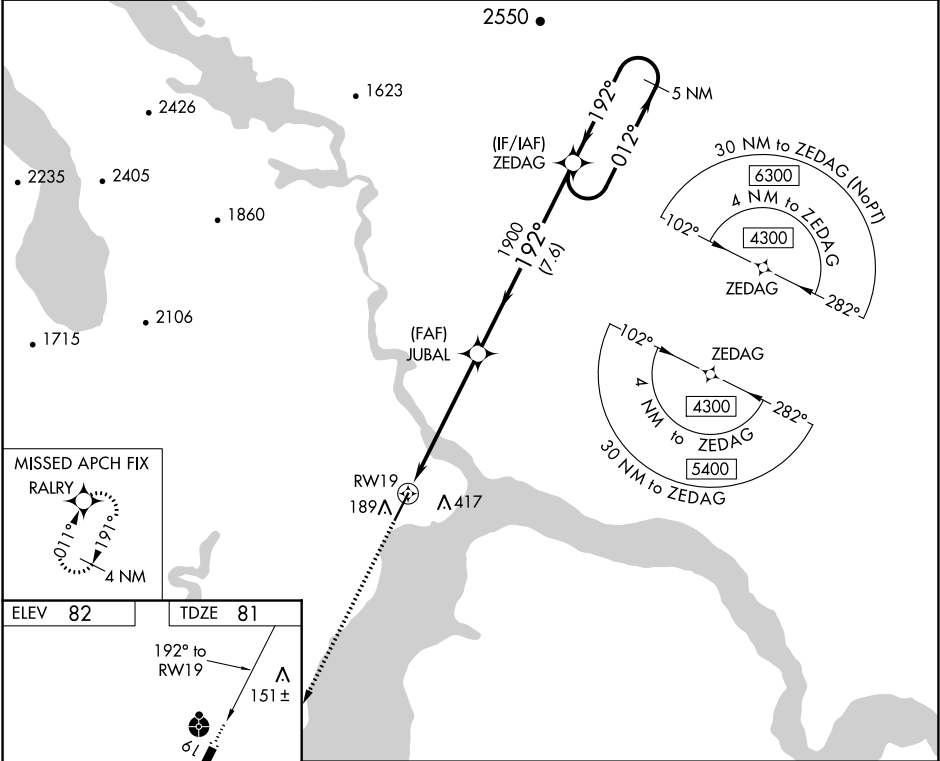
DILLINGHAM (DLG)(PADL)

⚠ Inop table does not apply to Cats A/B. Inop table does not apply when using Manokotok altimeter setting. Circling NA east of Rwy 1-19. Rwy 19 helicopter visibility reduction below ¾ SM NA. DME/DME RNP-0.3 NA. VDP NA when using Manokotok altimeter setting. When local altimeter setting not received, use Manokotok altimeter setting and increase all MDA 40 feet and increase LNAV Cat C/D visibility ½ SM. For inop ALS, increase LNAV Cat C/D visibility to 1 ¾ mile.

ODALS

MISSED APPROACH:
Climb to 2600 direct RALRY and hold.

AFIS ★ 125.0	ANCHORAGE CENTER 132.75 282.35	DILLINGHAM RADIO 123.6 (CTAF)
------------------------	--	---



ELEV 82

TDZE 81

2600

Visual Segment - Obstacles.

ZEDAG

5 NM Holding Pattern

012° → 4300

← 192°

RWY 19

1.4 NM to RWY 19

JUBAL

1900

1.4

4.2 NM

7.6 NM

CATEGORY	A	B	C	D
LNAV MDA	560-1	479 (500-1)	560-1 ¼	479 (500-1 ¼)
CIRCLING	600-1	518 (600-1)	700-1 ¾ 618 (700-1 ¾)	780-2 ¼ 698 (700-2 ¼)