

TIN CITY, ALASKA

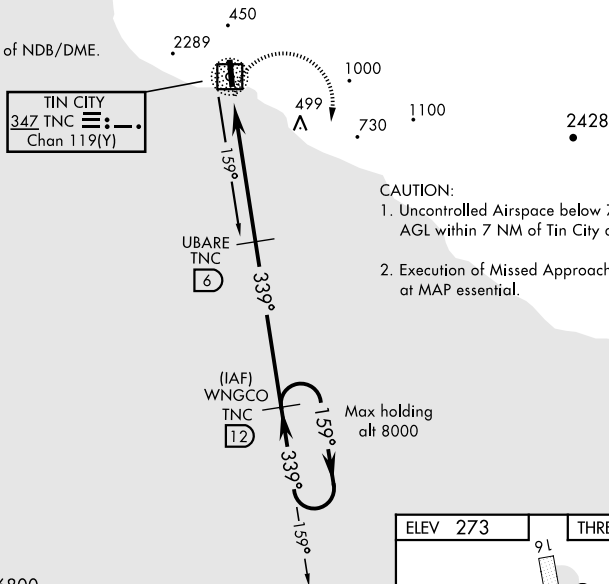
NDB/DME RWY 34

NDB/DME TNC 347 Chan 119 (Y)		APCH CRS 339°		Rwy Idg 4702 THRE 242 Arpt Elev 273		AL-2334 [USAF]		NDB/DME RWT 34 TIN CITY LRRS (PATC)	
▼ * Circling not authorized W of Rwy 16-34. Night operations not authorized.						MISSED APPROACH: Climbing right turn to 3500 intercept TNC 159° bearing to WNGCO and hold. Continue climb-in-hold to 3500.			
ANCHORAGE CENTER 133.3 290.4				TIN CITY RCO (NOME RADIO) 122.6			UNICOM 126.2 (CTAF)		

MILITARY CERTIFIED
AIRCREWS OR AUTHORIZED
CONTRACT AIRCRAFT ONLY

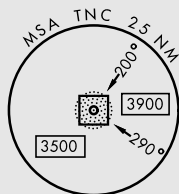
NOT FOR CIVIL USE

CAUTION:
2289' mountain 2 NM West of NDB/DME.

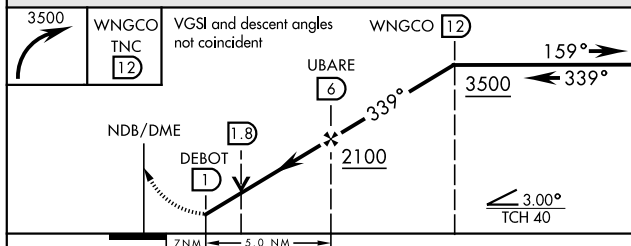


CAUTION:

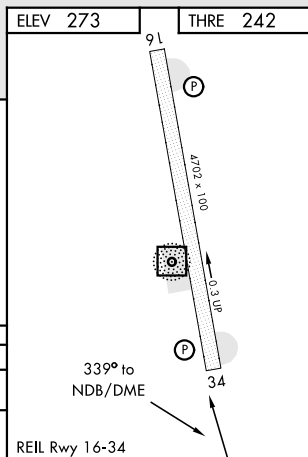
1. Uncontrolled Airspace below 700' AGL within 7 NM of Tin City airport.
2. Execution of Missed Approach at MAP essential.



EMERG SAFE ALT 100 NM 6800



CATEGORY	A	B	C	D
S-34	780-1 538 (600-1)		780-1½ 538 (600-1½)	
C CIRCLING*	780-1 507 (600-1)		780-1½ 507 (600-1½)	1120-2¾ 847 (900-2¾)



TIN CITY, ALASKA

65°34'N-167°55'W

TIN CITY LRRS (PATC)

Orig 08JAN15

NDB/DME RWY 34

AK, 31 DEC 2020 to 25 FEB 2021

AK, 31 DEC 2020 to 25 FEB 2021