

CAPE NEWENHAM, ALASKA

RNAV (GPS) RWY 15

APCH CRS	Rwy Idg	3945
172°	TDZE	456
	Arpt Elev	531

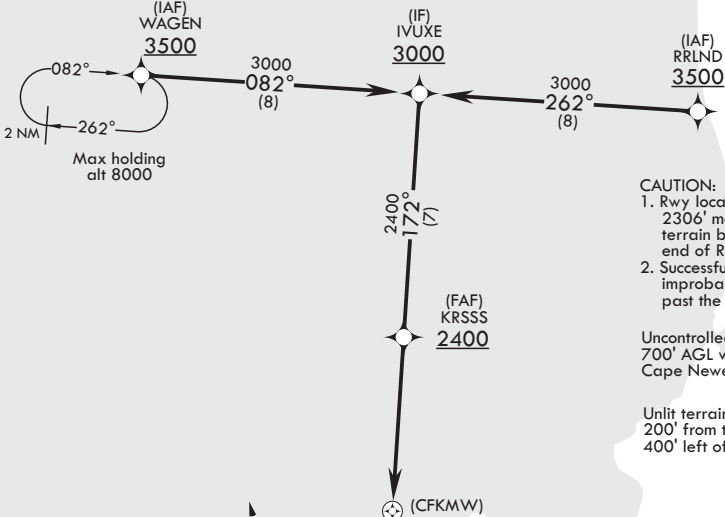
AL-2235 (USAF)

CAPE NEWENHAM LRRS (PAEH)

When VGSI inop, procedure NA at night. DME/DME RNP - 0.3 NA.	MISSED APPROACH: Climbing right turn to 3500 direct WAGEN and hold.
--	---

RADIO 126.2 (CTAF)	ANCHORAGE CENTER 124.2 251.1
-----------------------	---------------------------------






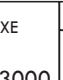
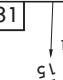

USAF Only: When VGSI inop, straight-in RWY 15 authorized at night with MAJCOM A3 approval.



MILITARY CERTIFIED
AIRCREWS OR
AUTHORIZED CONTRACT
AIRCRAFT ONLY

NOT FOR CIVIL USE

EMERG SAFE ALT 100 NM 6900

 						
3500	WAGEN	IVUXE	3000	KRSSS	2400	2400
172°						
≤ 3.00° TCH 41						
1.7 5 NM						
CATEGORY	A	B	C	D		
LNAV MDA	1140-2 684 (700-2)	1220-2 764 (700-2)	2080-3	1624	(1600-3)	
CIRCLING	NOT AUTHORIZED					
Land Rwy 15 Tkof Rwy 33						
REIL Rwy 15						

CAPE NEWENHAM, ALASKA

58°39'N - 162°04'W

CAPE NEWENHAM LRRS (PAEH)

Amdt 1 07DEC17

RNAV (GPS) RWY 15

AK, 31 DEC 2020 to 25 FEB 2021

AK, 31 DEC 2020 to 25 FEB 2021